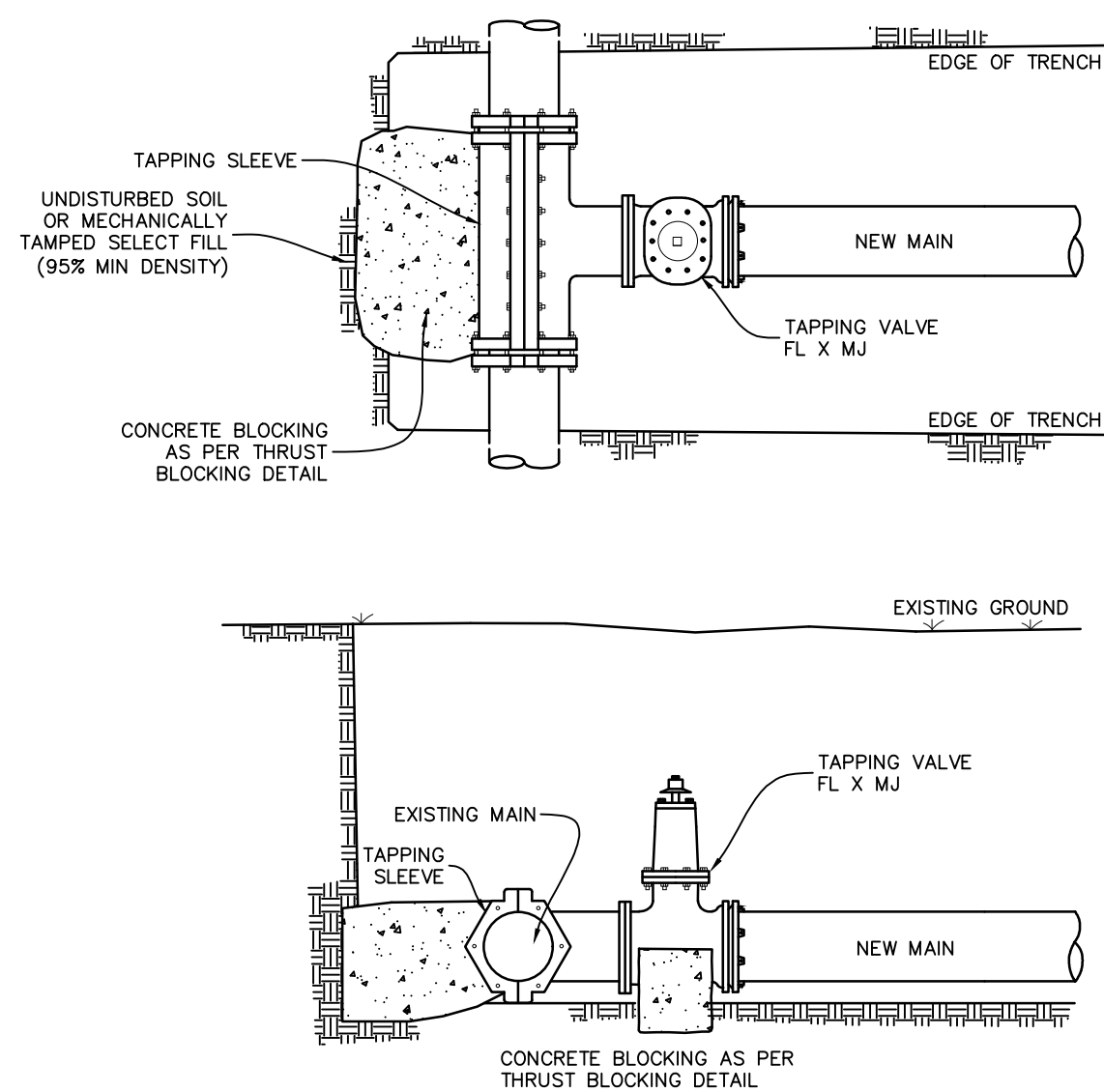


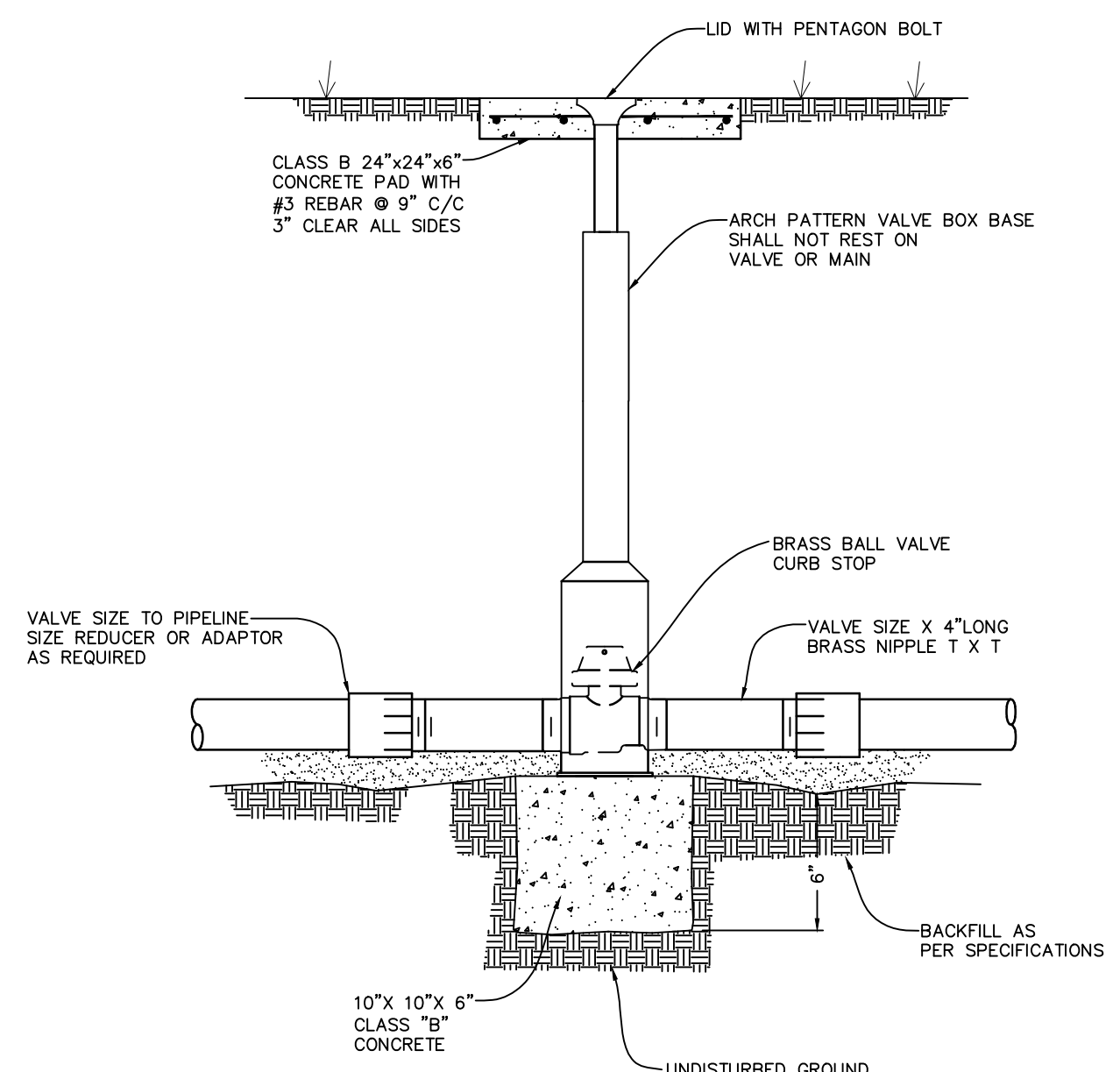
WATER VALVE BURIED INSTALLATION
SCALE: N.T.S.



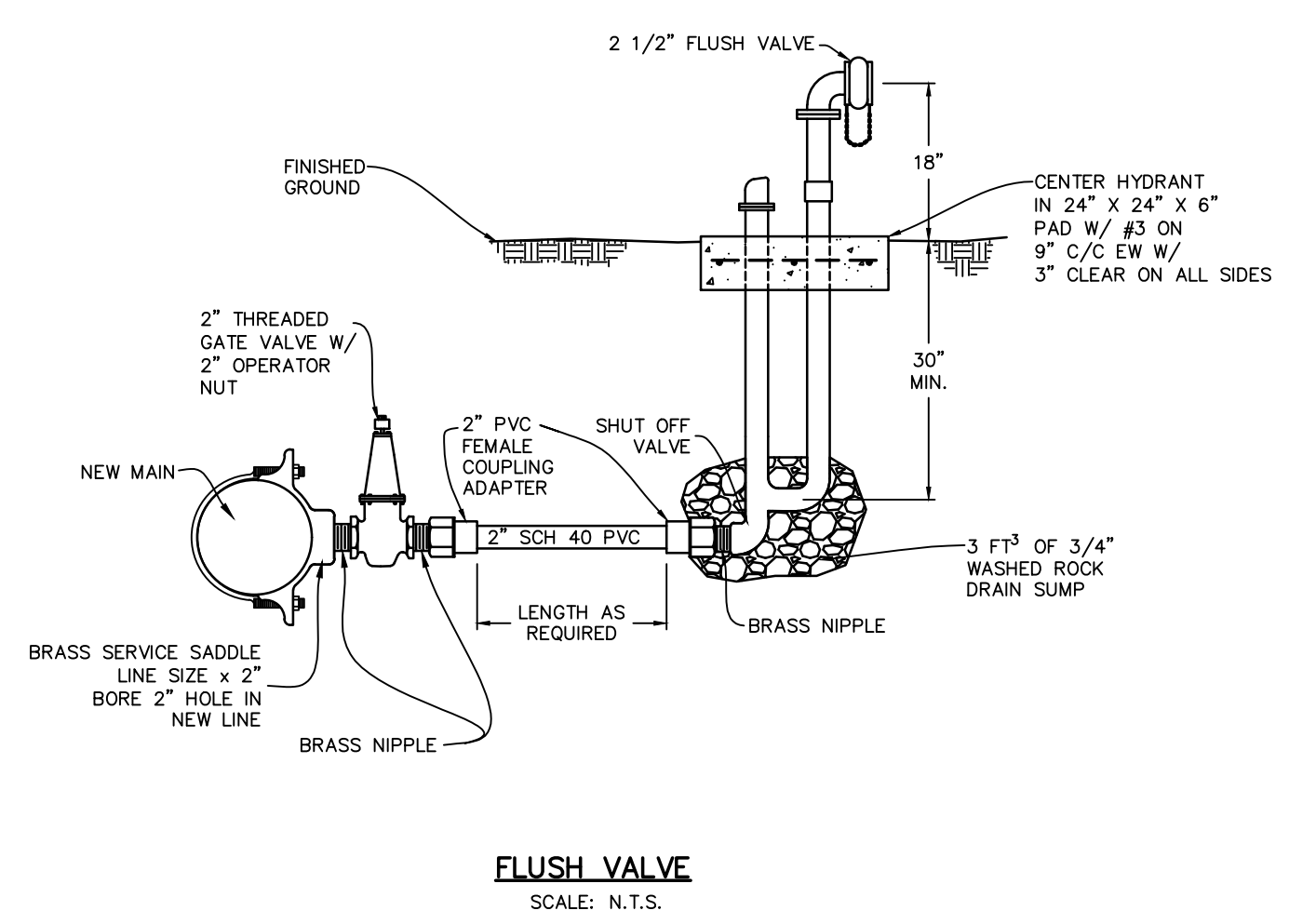
TAPPING SLEEVE & VALVE
SCALE: N.T.S.

BOTH VALVE AND SLEEVE (INCLUDING NUTS, BOLTS, AND FLANGES) SHALL BE WRAPPED WITH MINIMUM 3 MIL POLY WRAP, OR SEALED WITH RUBBER-IN-A-CAN PRIOR TO THRUST BLOCK PLACEMENT OR BACKFILL. PIPE WALL REMOVED FROM MAIN BY TAPPING SHALL BE PROVIDED TO ENGINEER.

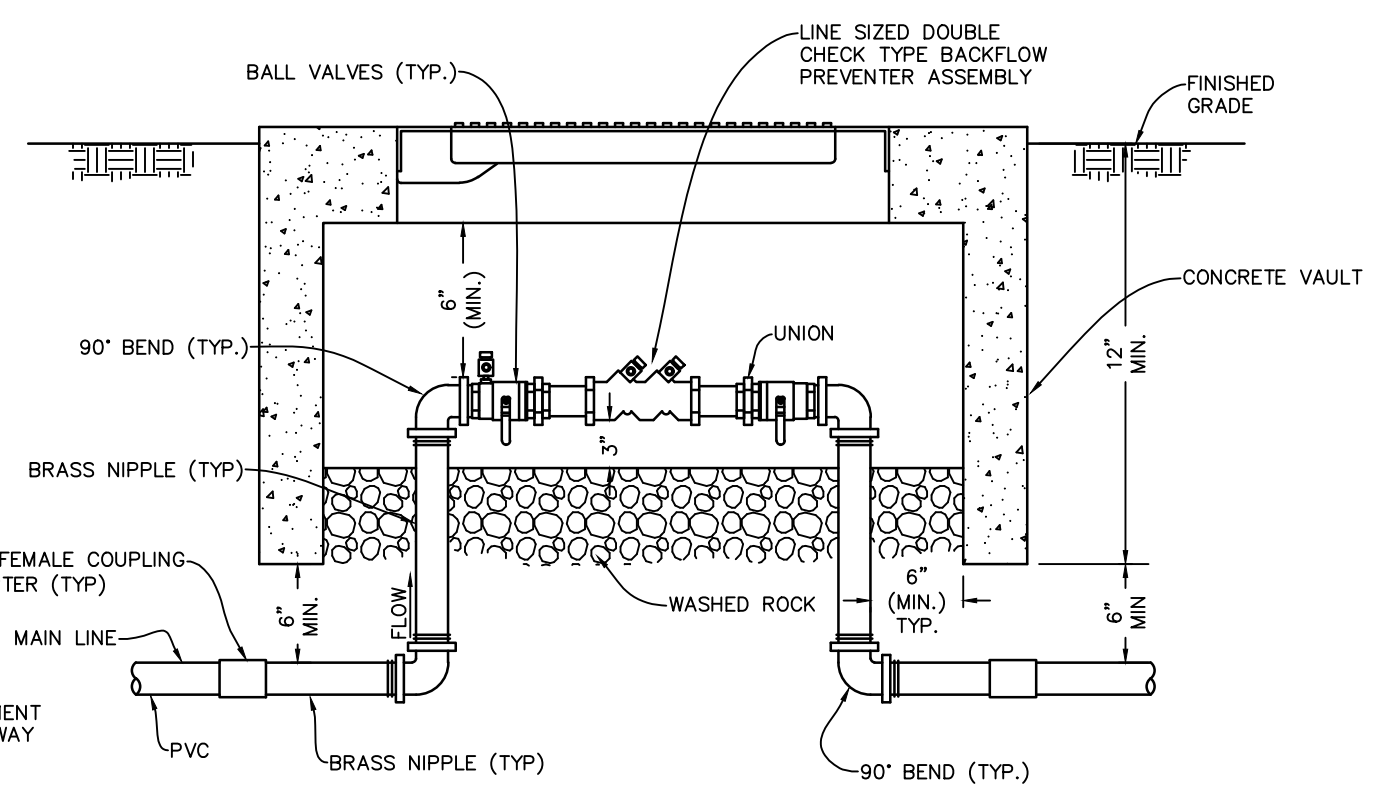
ENGINEER TO CHECK OWNER PREFERENCE ABOUT USING POLY WRAP OR RUBBER-IN-A-CAN



1 1/2\"/>

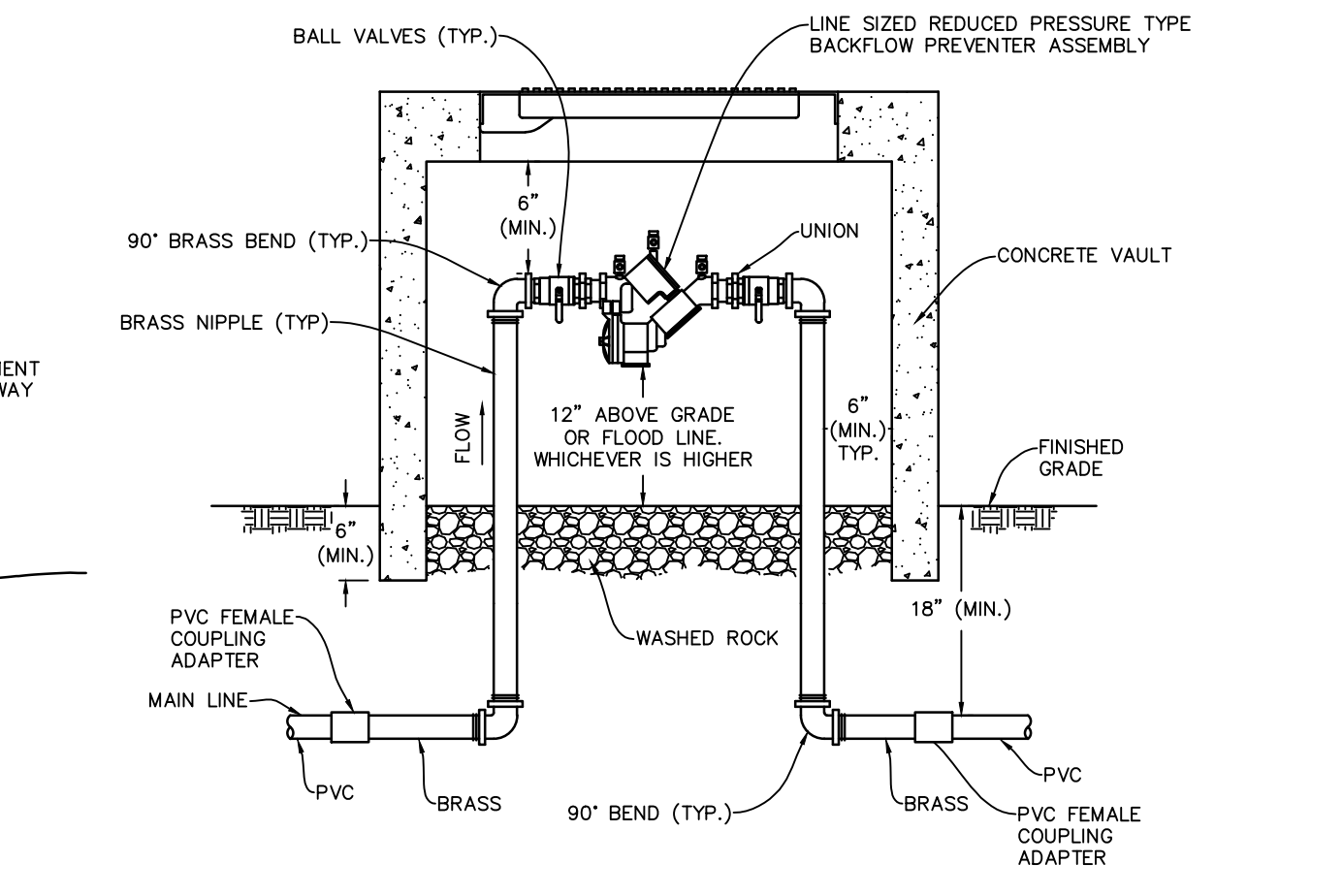


FLUSH VALVE
SCALE: N.T.S.



3\"/>

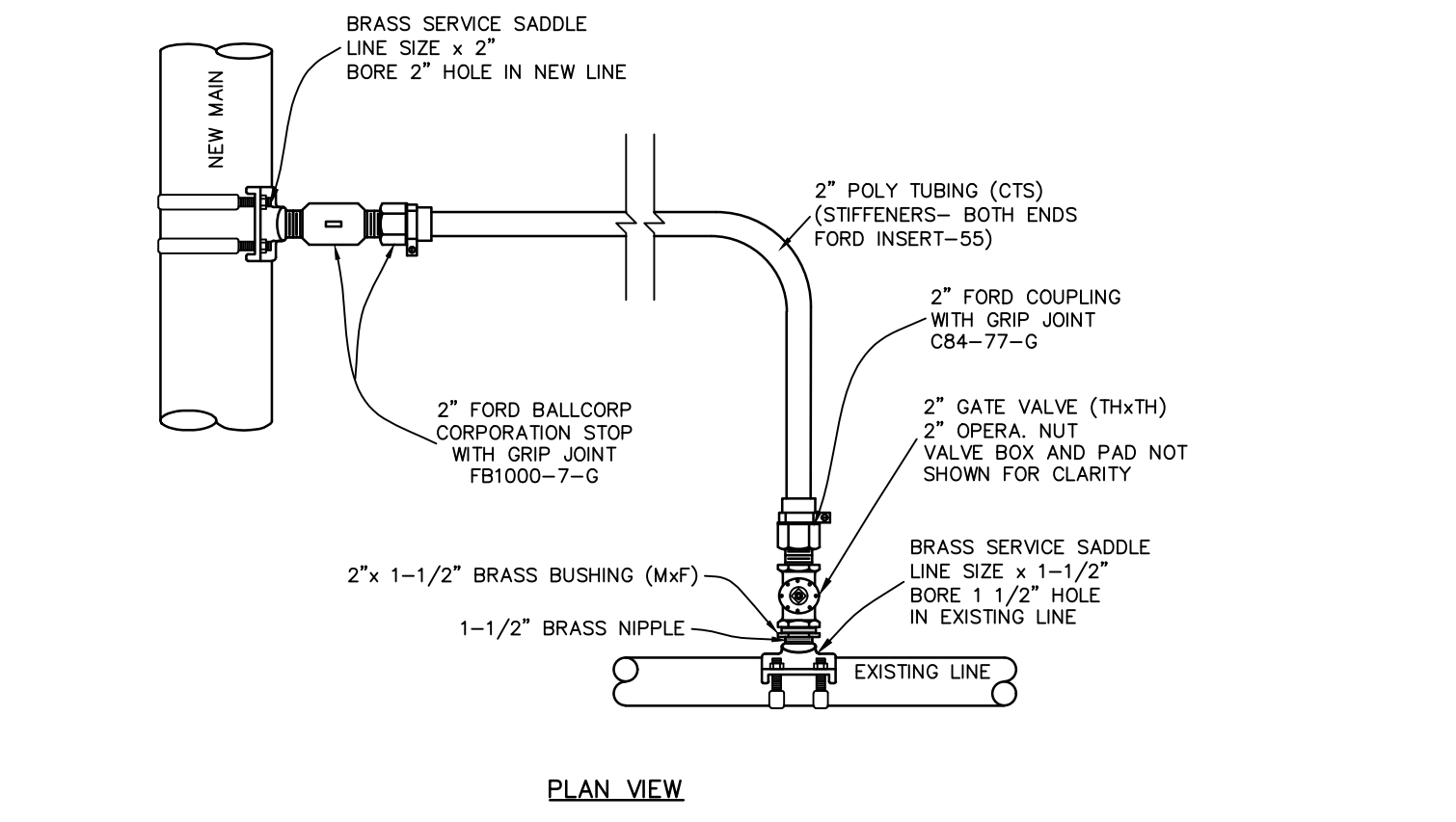
NOTE: PLACE BASE OF VAULT ON UNDISTURBED SOIL OR MECHANICALLY TAMPED BACKFILL.



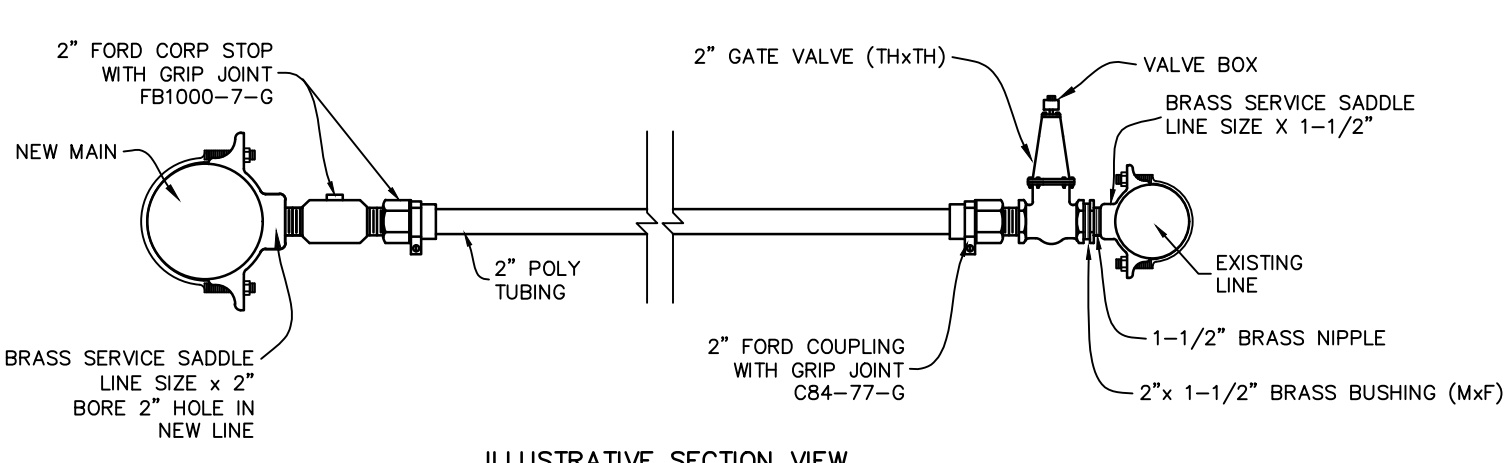
3\"/>

NOTE: PLACE BASE OF VAULT ON UNDISTURBED SOIL OR MECHANICALLY TAMPED BACKFILL.

THESE PLANS DO NOT INCLUDE NECESSARY COMPONENTS FOR CONSTRUCTION SAFETY. NOTE: LOCATION OF EXISTING BURIED UTILITIES, WHERE SHOWN, IS APPROXIMATE ONLY. THERE MAY EXIST UTILITIES WHICH ARE NOT SHOWN. THE CONTRACTOR SHALL BE RESPONSIBLE FOR LOCATING AND PROTECTION OF ALL BURIED UTILITIES.



PLAN VIEW

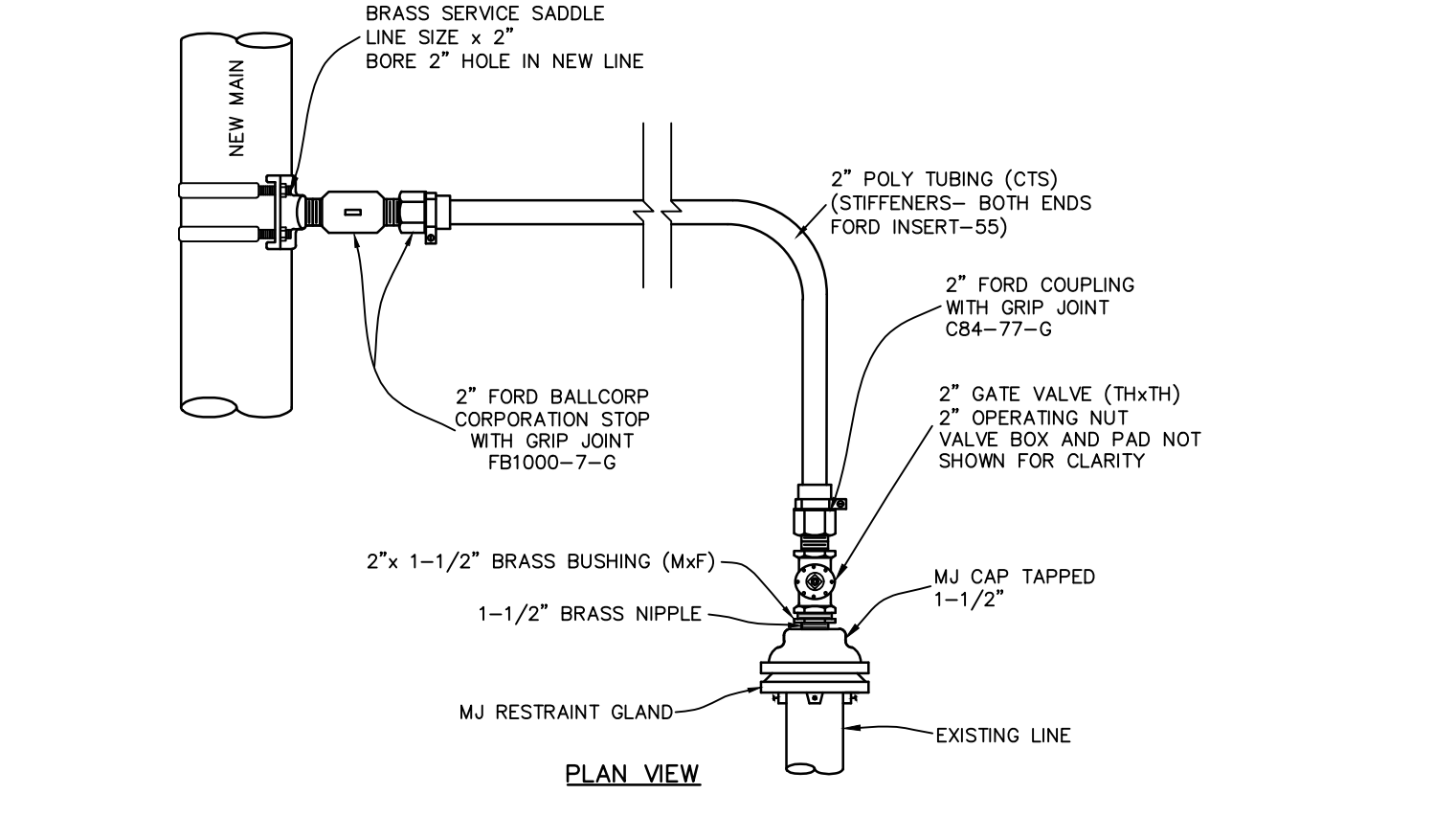


ILLUSTRATIVE SECTION VIEW

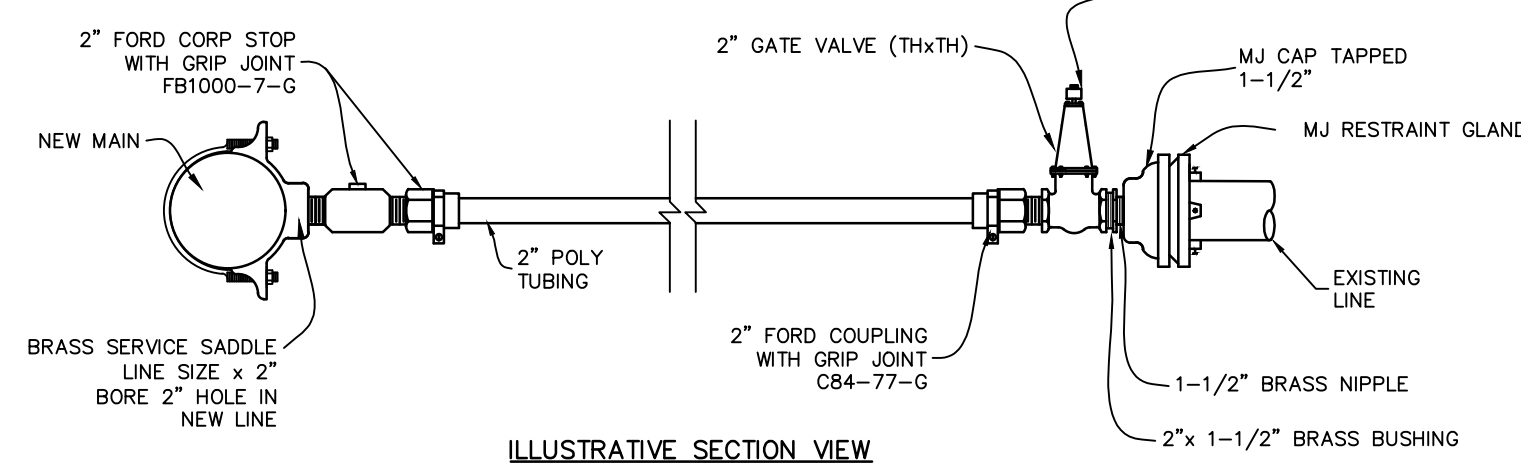
NOTE: FOR EXISTING MAINS, CUT IN A LINE SIZE TEE IN PLACE OF THE SERVICE SADDLE. ADAPT BRANCH OF NEW TEE TO VALVE (NO PVC MALE ADAPTERS.)

CONNECTION OF NEW MAIN TO 3\"/>

SCALE: N.T.S.



PLAN VIEW

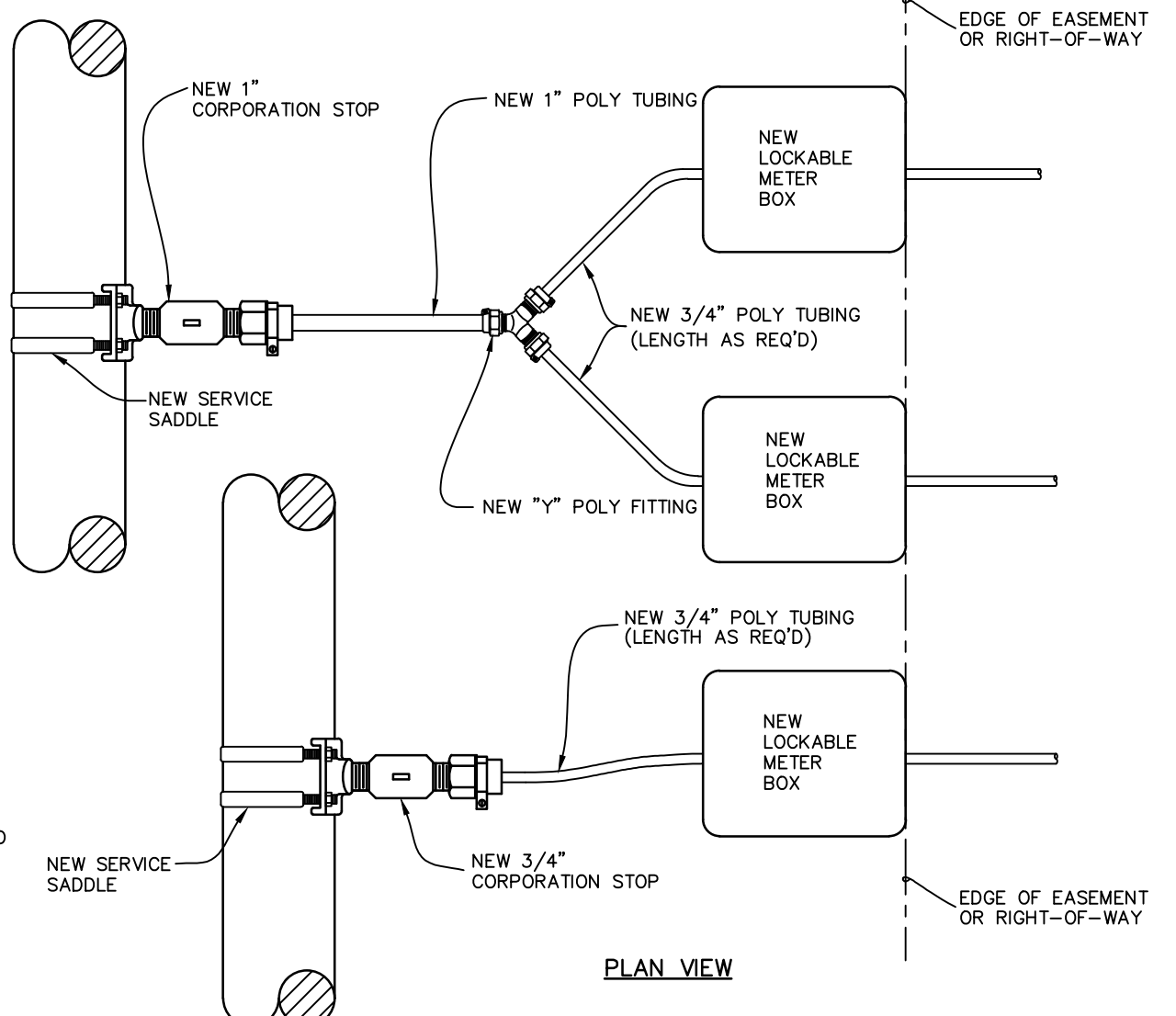


ILLUSTRATIVE SECTION VIEW

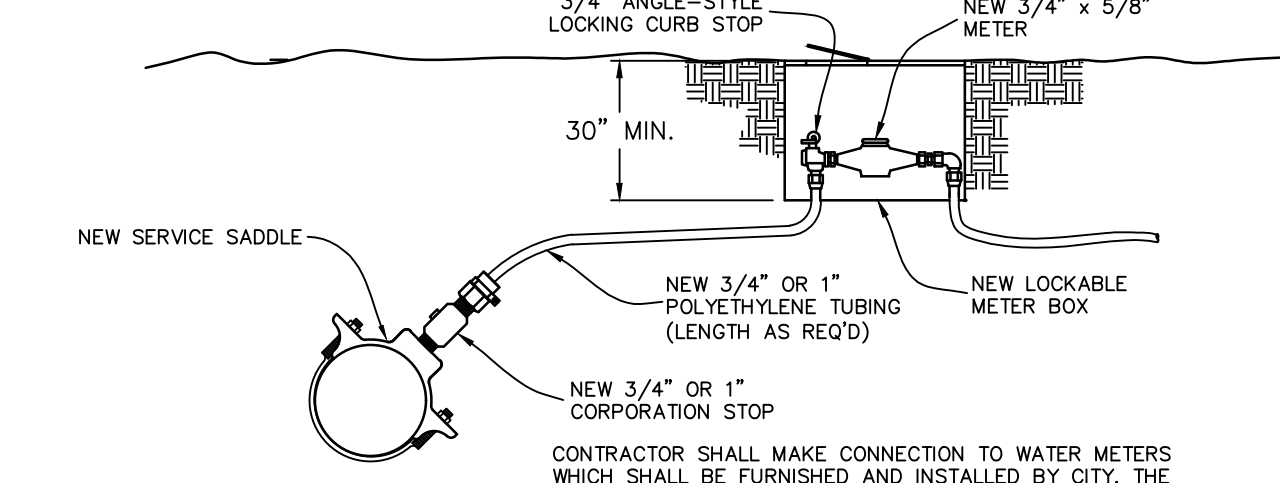
NOTE: FOR EXISTING MAINS, CUT IN A LINE SIZE TEE IN PLACE OF THE SERVICE SADDLE. ADAPT BRANCH OF NEW TEE TO VALVE (NO PVC MALE ADAPTERS.)

CONNECTION OF NEW MAIN TO END OF 3\"/>

SCALE: N.T.S.



PLAN VIEW

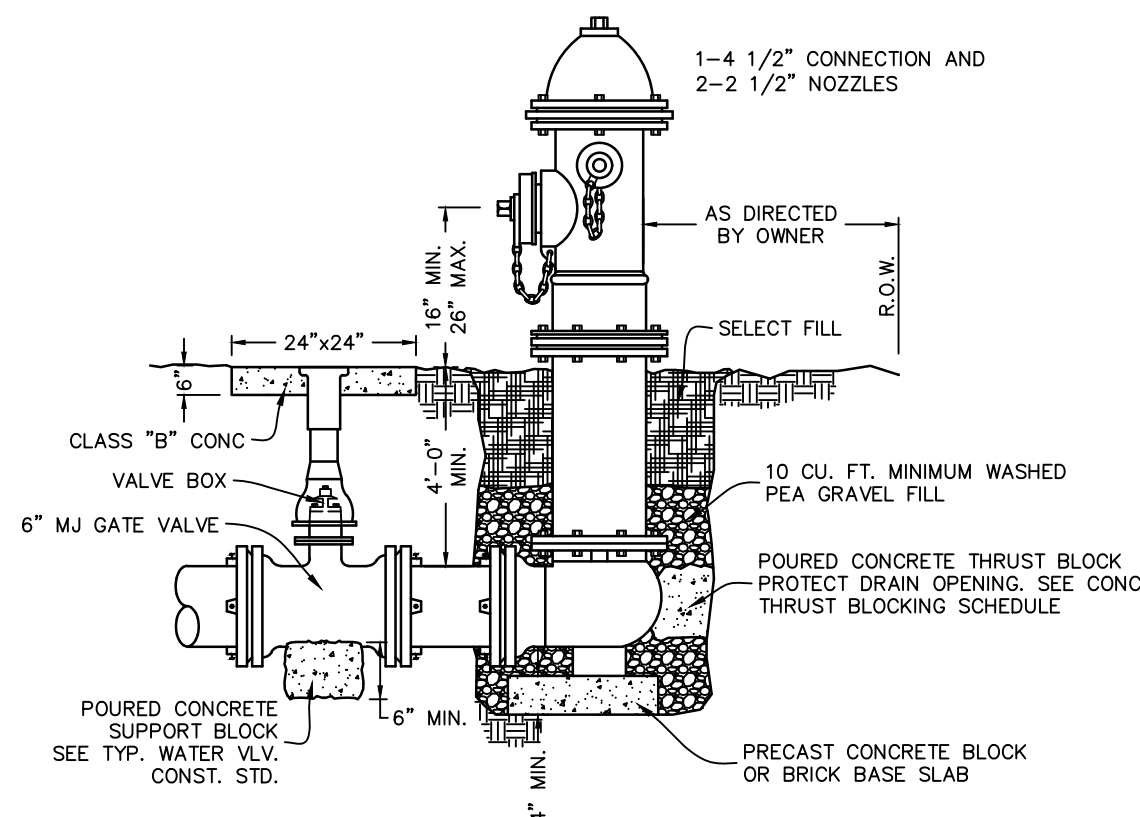


PROFILE VIEW

WATER SERVICE CONNECTION
SCALE: N.T.S.

CONTRACTOR SHALL MAKE CONNECTION TO WATER METERS WHICH SHALL BE FURNISHED AND INSTALLED BY CITY. THE CONTRACTOR SHALL PROVIDE NO LESS THAN TWO DAYS NOTICE TO THE SYSTEM OWNER PRIOR TO WATER METER CONNECTION. LOCATIONS OF PROPOSED CONNECTIONS SHALL BE AS DETERMINED IN THE FIELD BY THE SYSTEM OWNER. ALL SERVICE LINE TUBING SHALL BE POLYETHYLENE TUBING PER TECHNICAL SPECIFICATIONS.

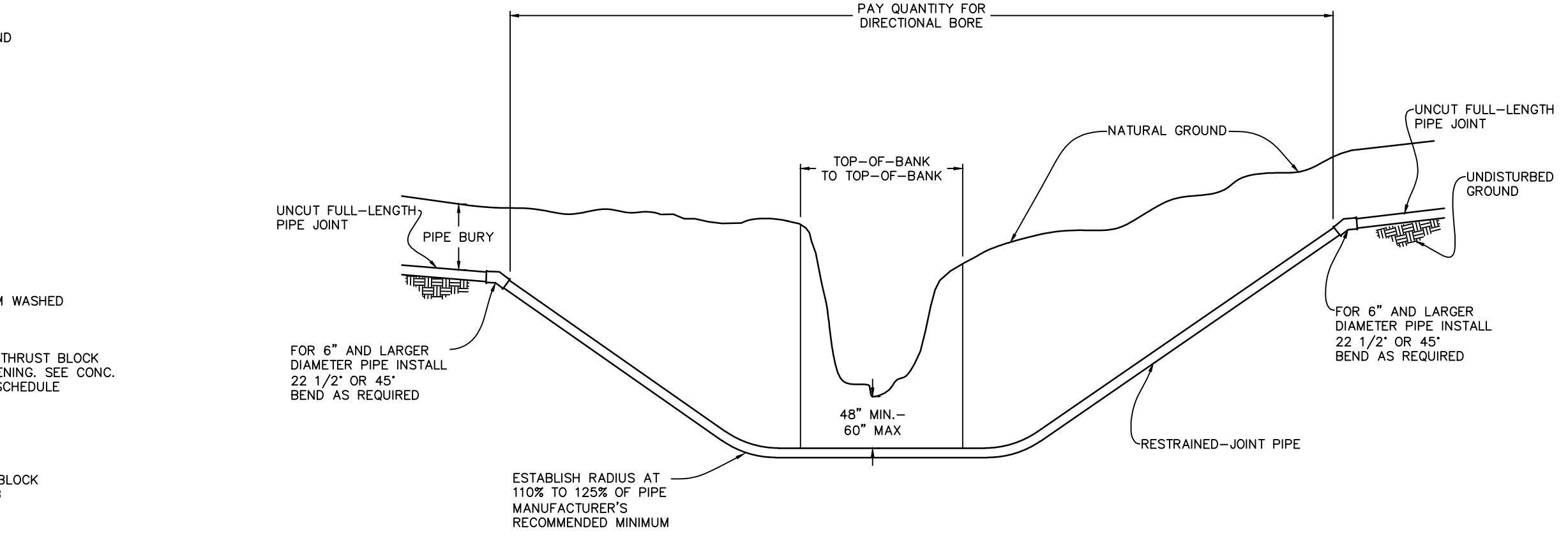
X:\000_Universal_Folder\VEI_Standards\AutoCAD\Construction_Standards\pdf.dwg 3/7/2022 8:08 AM By: Cleim



NOTE: CONNECTION TO PIPE, VALVE, AND HYDRANT SHALL BE MECHANICAL JOINT. KEEP CONCRETE CLEAR OF ALL BOLTS.

TYPICAL 5 1/4" FIRE HYDRANT INSTALLATION

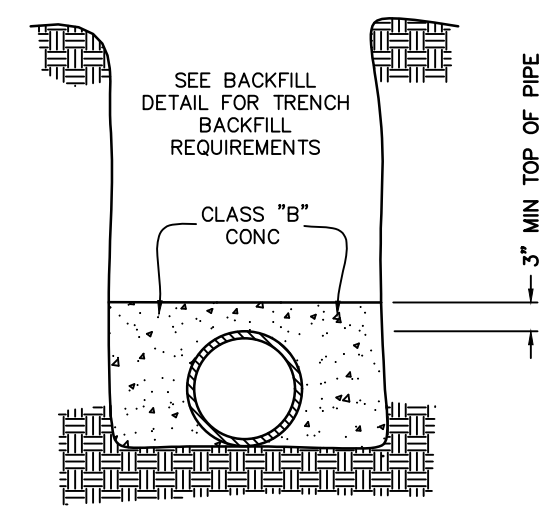
ALL MJ JOINTS REQUIRE MECHANICAL THRUST RESTRAINT IN ADDITION TO CONCRETE THRUST BLOCKING.



HORIZONTAL DIRECTIONAL DRILLING (DIRECTIONAL BORE) FOR CREEK CROSSINGS

SCALE: N.T.S.

ENGINEER SHALL VERIFY BORE LENGTH BASED UPON DIRECTIONAL BORE LIMITATIONS BASED ON PIPE SIZE, WALL THICKNESS, ETC.

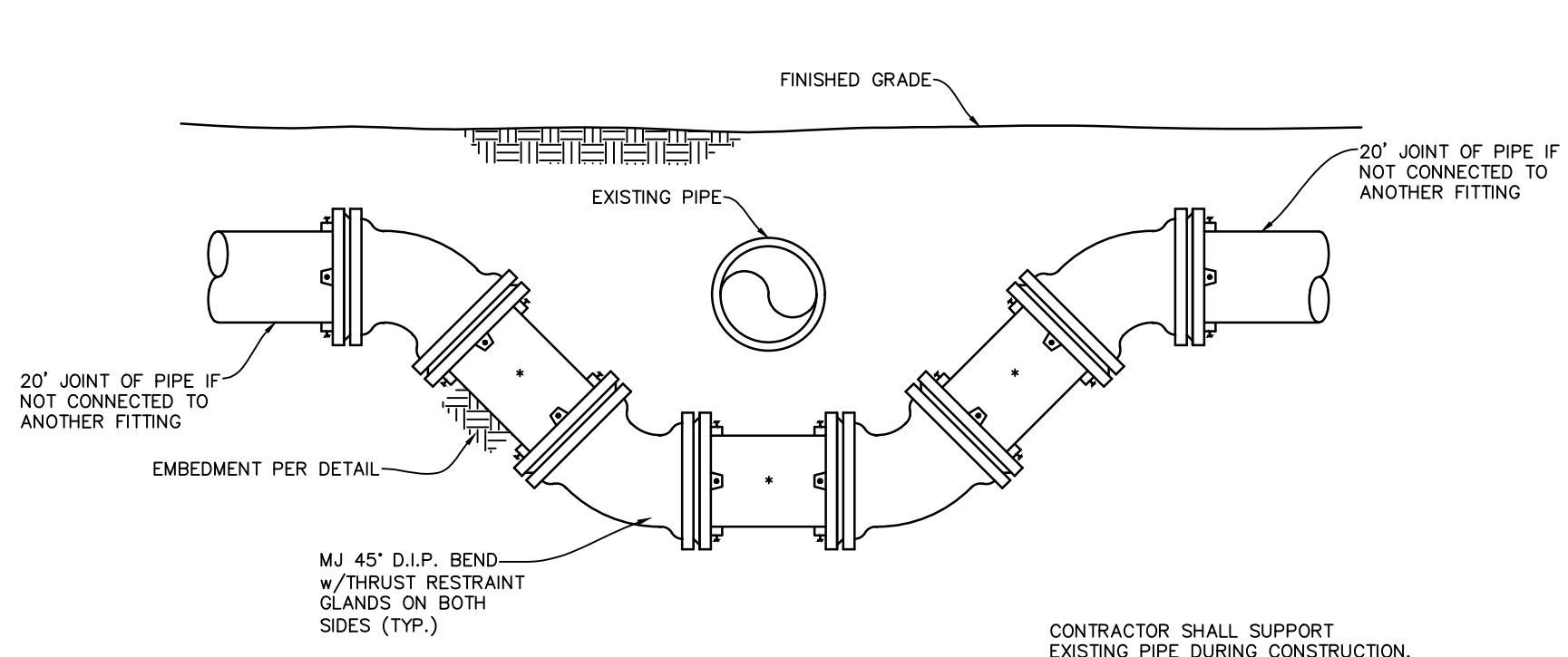
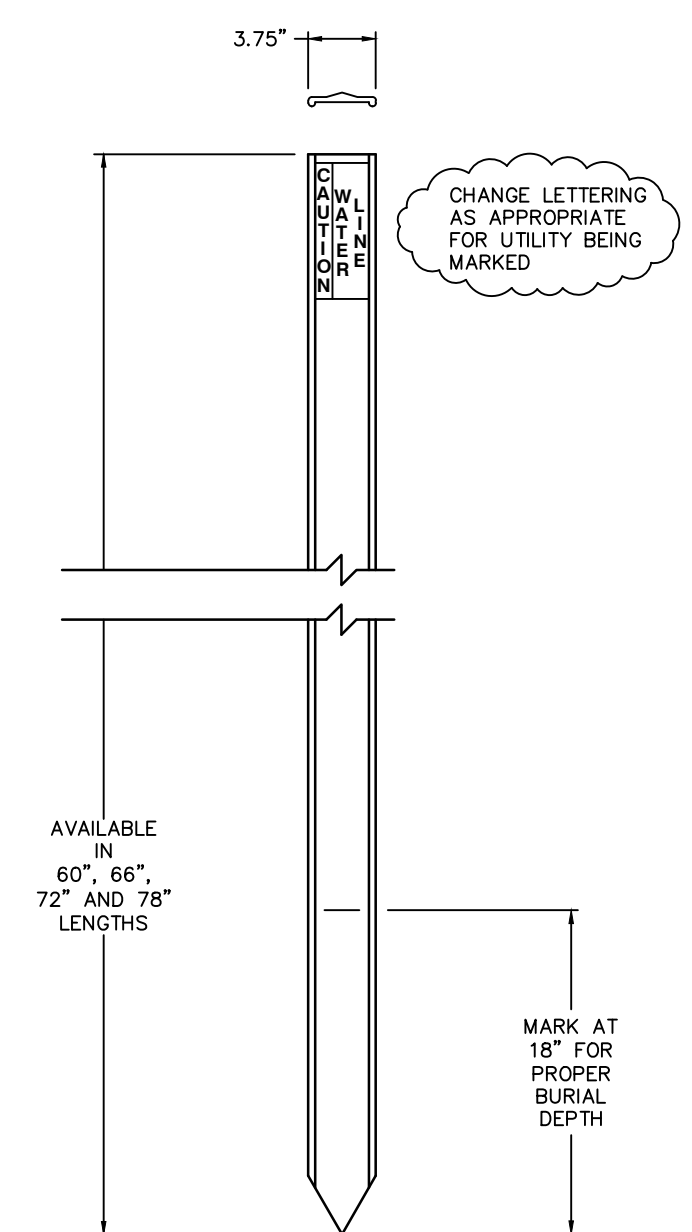


NOTES:

- 1) CONC. SHALL BE 3" ABOVE TOP OF THE PIPE TO THE FOUNDATION, AND FROM TRENCH WALL TO TRENCH WALL.
- 2) CONC. SHALL BE WORKED UNDERNEATH THE PIPE HAUNCH.
- 3) HOLD DOWN BRACING SHALL BE USED TO PREVENT FLOTATION AND SHALL REMAIN IN PLACE UNTIL THE CONC. HAS CURED FOR 24 HRS.

CONCRETE ENCASEMENT OF PIPE

SCALE: N.T.S.



AVOIDING CONFLICTING UTILITY LINES

SCALE: N.T.S.

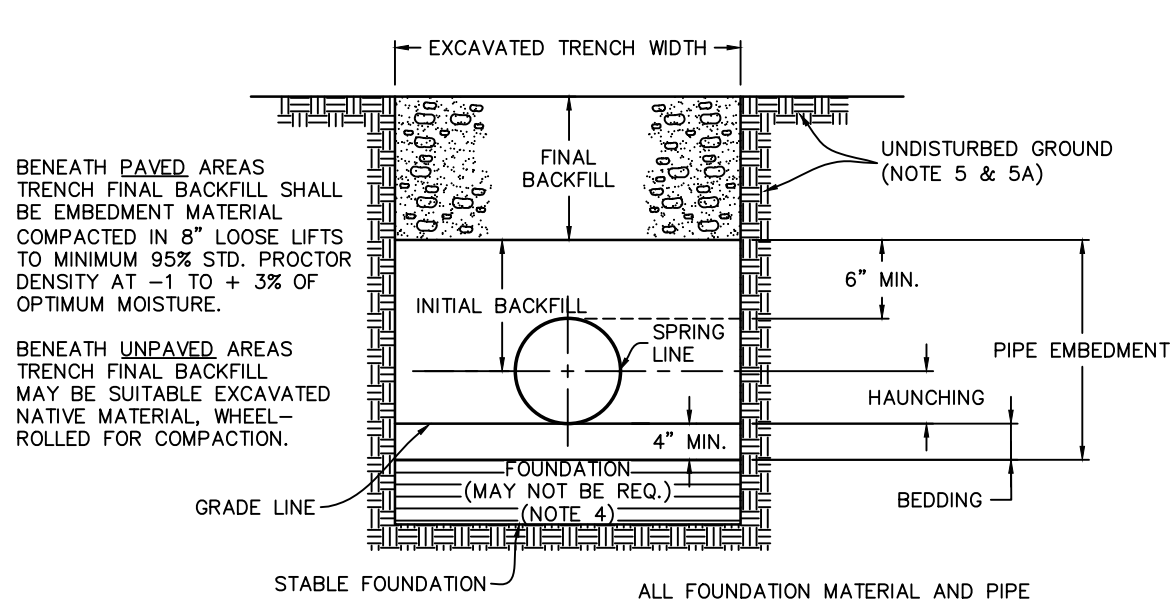
* ONLY SINGLE JOINTS OF PIPE SHALL BE USED BETWEEN FITTINGS.

PIPE USED FOR	SIZE	TRENCH WIDTH MINIMUM	TRENCH WIDTH MAXIMUM	MINIMUM BURY (1)
WATER SERVICES	3/4"-1-1/4"	6"	12"	30"
WATER SERVICES	1 1/2"-2-1/2"	6"	12"	30"
WATER MAINS	1"	6"	12"	30"
WATER MAINS	1-1/4"	6"	12"	30"
WATER MAINS	1-1/2"	6"	12"	30"
WATER MAINS	2"	6"	12"	30"
WATER MAINS	2-1/2"	6"	12"	30"
WATER MAINS	3"	6"	18"	30"
WATER AND SEWER MAINS	4"	20"	24"	36"
WATER AND SEWER MAINS	6"	22"	30"	36"
WATER AND SEWER MAINS	8"	24"	30"	36"
WATER AND SEWER MAINS	10"	26"	30"	42"
WATER AND SEWER MAINS	12"	28"	36"	42"
SEWER MAINS	15"	31"	42"	42"
WATER MAINS	16"	31"	42"	42"
WATER AND SEWER MAINS	18"	35"	42"	42"

(1) THESE BURIES ARE APPLICABLE TO GRAVITY PIPELINE WHERE NO DEPTH IS SPECIFIED IN THE PLAN/PROFILE DRAWINGS, AND TO PRESSURE PIPELINES, IN ADDITION, NO PRESSURE LINE SHALL BE LESS THAN 36" DEEP UNDER BORROW DITCHES OR CREEK BOTTOMS. WHERE SPECIFIED ELEVATIONS ARE SHOWN ELSEWHERE FOR GRAVITY LINES, SUCH AS IN PLAN/PROFILE DRAWINGS, THOSE GRADES SHALL GOVERN.

TRENCH WIDTH AND BURY GRAVITY AND/OR PRESSURE LINES

SCALE: N.T.S.

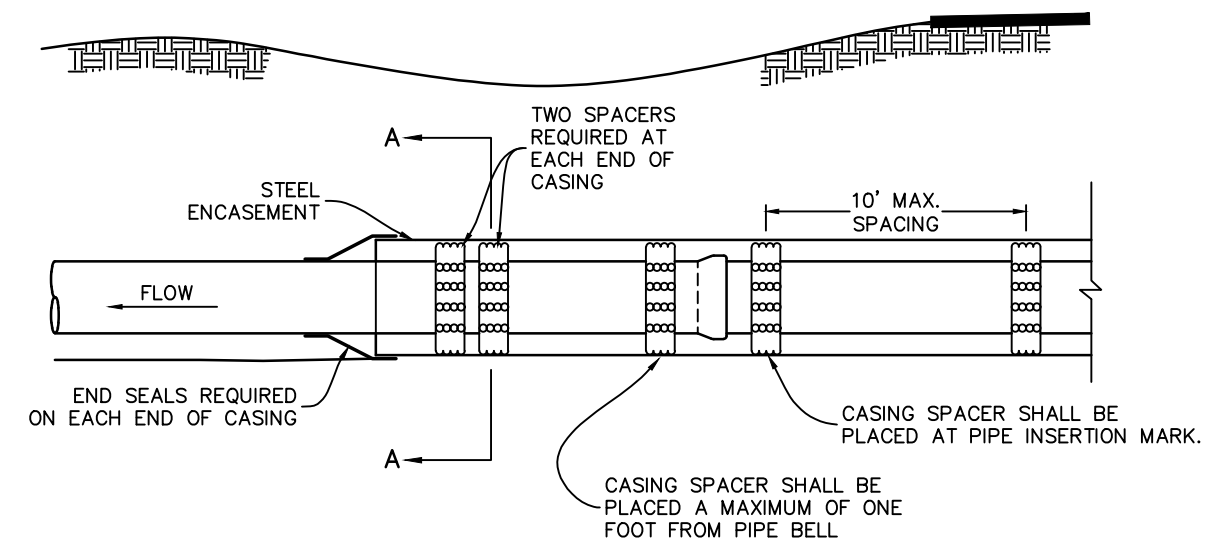
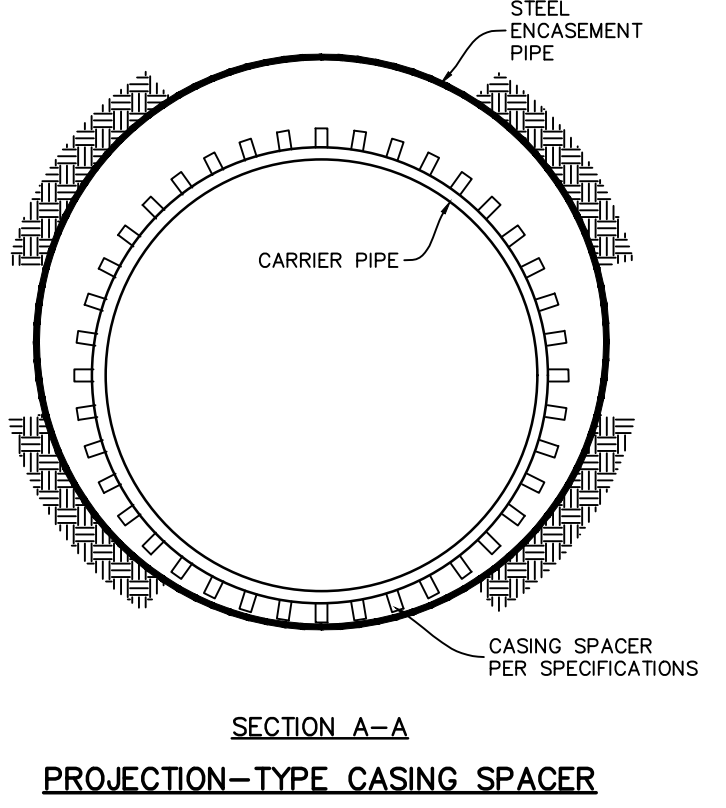


BACKFILL NOTES:

1. ON HIGHWAY RIGHT-OF-WAY, BACKFILL METHODS SHALL CONFORM TO THE OWNER'S PERMIT IF MORE RESTRICTIVE THAN NOTED ABOVE.
2. SEE "STREET, DRIVEWAY, AND SIDEWALK REPAIRS" STANDARD FOR WEARING SURFACE, BASE AND SUBBASE REQUIREMENTS FOR TRENCHES BENEATH SURFACED OR PAVED AREAS.
3. TRENCHES BENEATH STRUCTURES SHALL BE BACKFILLED SAME AS UNDER SURFACED AREAS.
4. PIPE SHALL NOT BE LAID ON UNSTABLE FOUNDATION. THE CONTRACTOR SHALL REMOVE SUCH UNSUITABLE MATERIAL AND REPLACE IT WITH ACCEPTABLE MATERIAL.
5. FOR TRENCHING IN UNPAVED AREAS, IN THE AREA 12" OR MORE ABOVE THE TOP OF THE PIPE, THE EXCAVATED TRENCH WIDTH AND BACKSLOPE MAY VARY TO COMPLY WITH APPROPRIATE SAFETY PRACTICES AND REGULATIONS.
- 5A. IN ALL TRENCHED AREAS THAT ARE TO RECEIVE PAVEMENT REPAIR, THE PIPE WILL BE INSTALLED IN TRENCHES WITH NEAR VERTICAL WALLS EMPLOYING OSHA-APPROVED TRENCH SAFETY METHODS (WALL JACKS, TRENCH BOXES, ETC) SLOPING THE SIDES OF THE TRENCH WILL NOT BE ALLOWED SO THAT PAVEMENT REPAIR AT THE TOP OF THE TRENCH WILL BE MINIMIZED.

BACKFILL FOR SANITARY SEWER (GRAVITY AND AND PRESSURE) AND FOR 6" OR LARGER POTABLE WATER MAINS

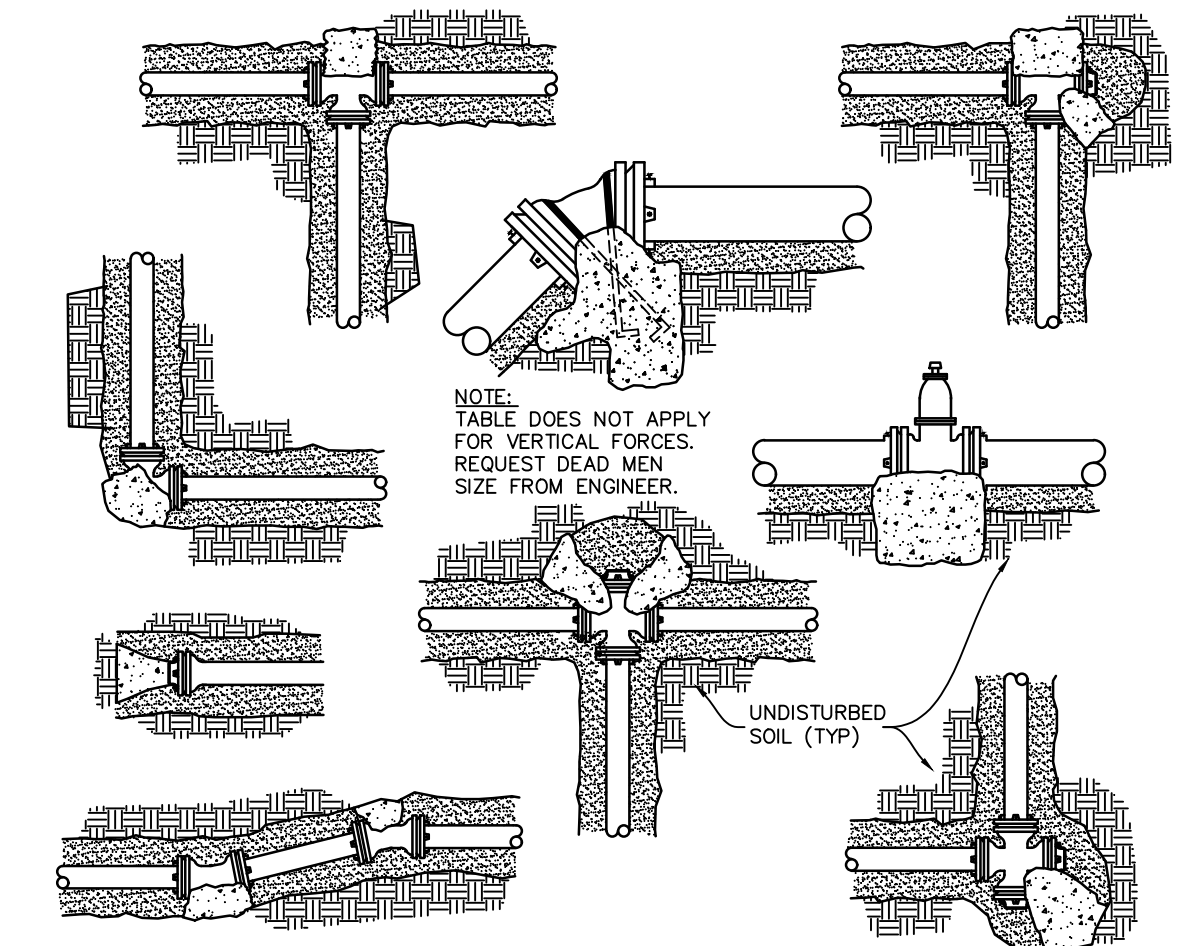
SCALE: N.T.S.



PIPE DESCRIPTION	CASING NOMINAL SIZE	TRACI CASING SPACER		CASING REQ'D	WALL THICKNESS	CASING COATING
		PROJECTION REQ'D	TYPE REQ'D			
xxx	xxx	xxx	xxx	xxx	xxx	xxx
xxx	xxx	xxx	xxx	xxx	xxx	xxx
xxx	xxx	xxx	xxx	xxx	xxx	xxx

INSTALLATION IN ENCASEMENT PIPE

SCALE: N.T.S.



PIPE	11-1/4"	22-1/2"	45"	90"	VALUES PER
2"	0.2	0.2	0.5	0.8	0.6
4"	0.5	0.8	1.7	2.7	2.8
6"	0.9	1.5	3.0	6.0	4.0
8"	1.4	2.9	6.0	10.0	8.5
10"	2.0	4.5	9.0	16.2	12.0
12"	3.0	6.8	12.0	21.0	16.0
18"	6.2	14.0	23.0	50.0	30.0
20"	11	21	42.2	78	55

CONCRETE THRUST BLOCKING SCHEDULE

SCALE: N.T.S.

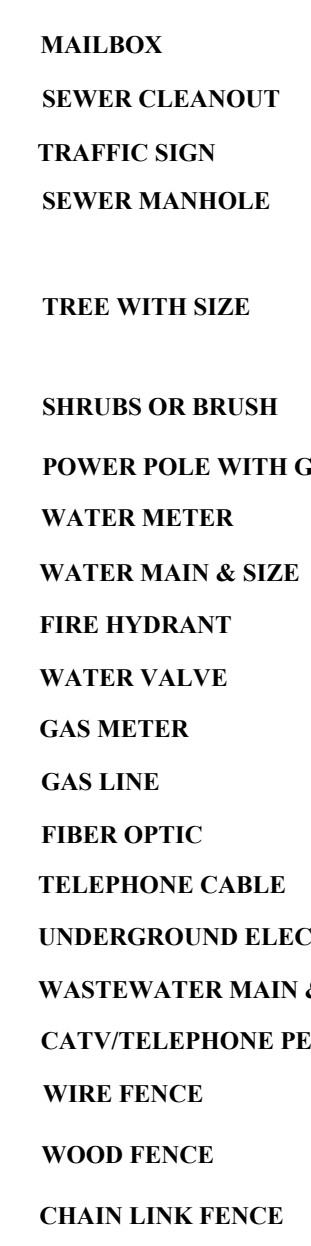
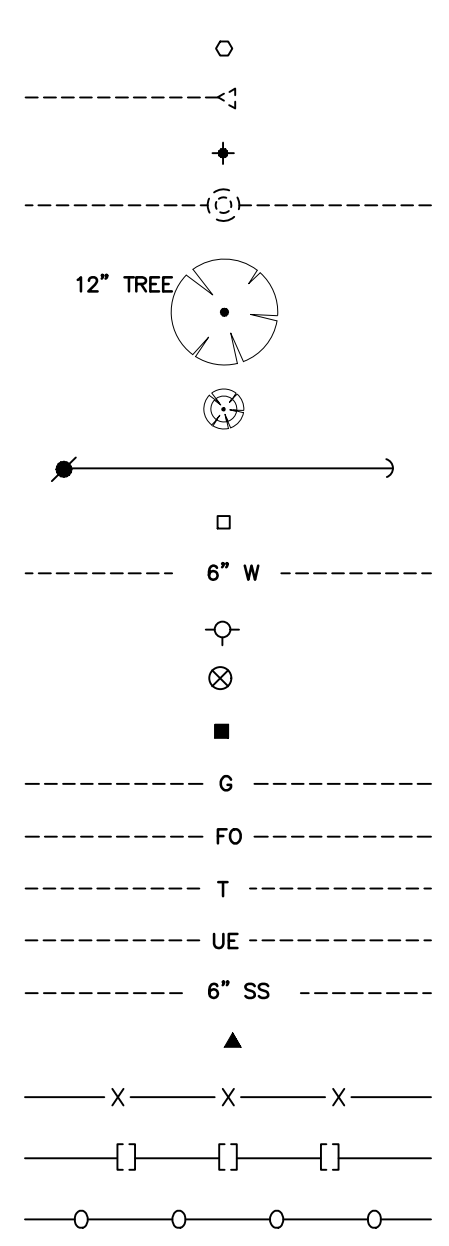
ENGINEER TO DETERMINE OWNER'S PREFERENCE FOR POLY WRAP OF RUBBER-IN-A-CAN

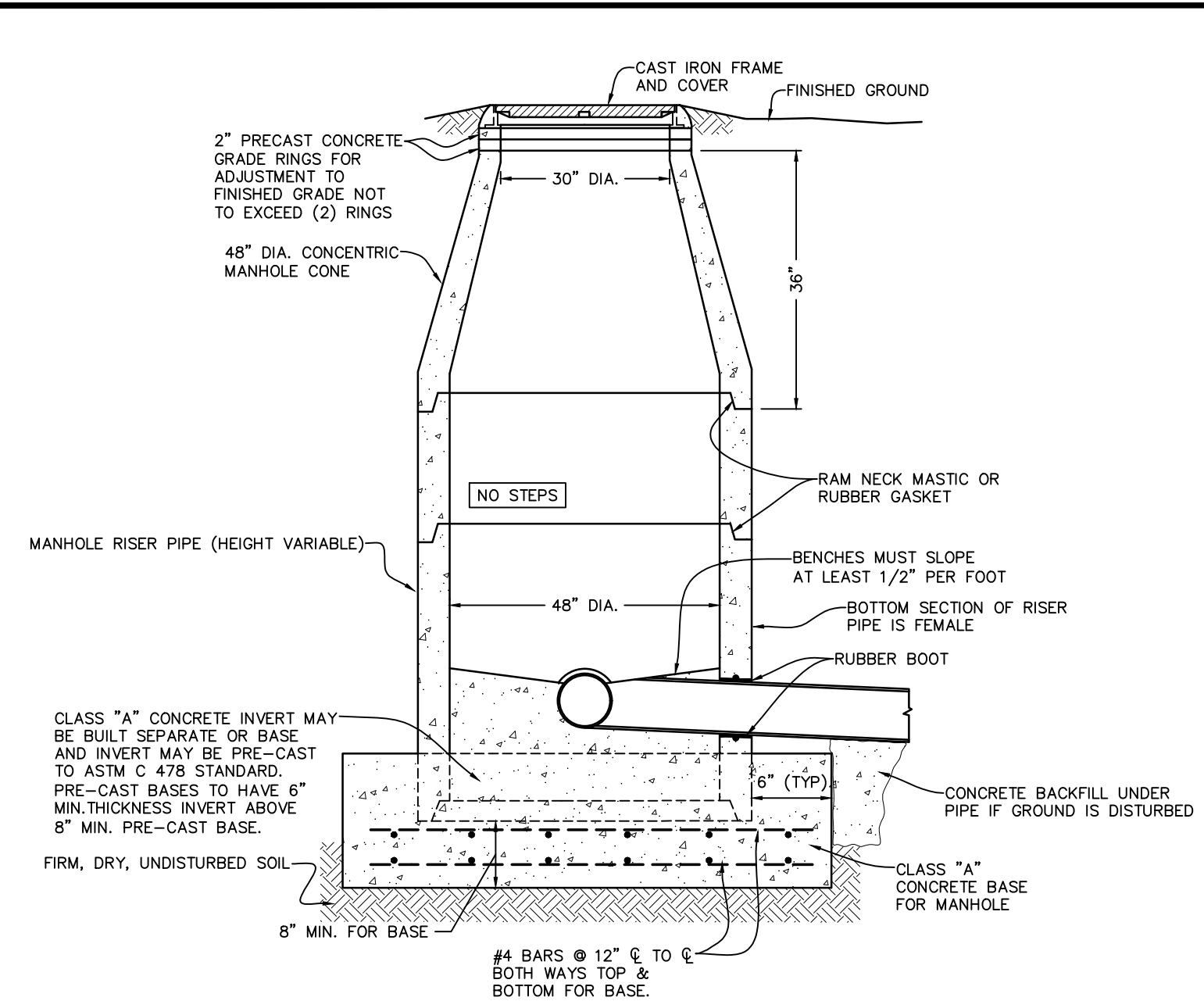
THESE PLANS DO NOT INCLUDE NECESSARY COMPONENTS FOR CONSTRUCTION SAFETY.

NOTE: LOCATION OF EXISTING BURIED UTILITIES, WHERE SHOWN, IS APPROXIMATE ONLY. THERE MAY BE UTILITIES WHICH ARE NOT SHOWN. THIS CONTRACTOR SHALL BE RESPONSIBLE FOR LOCATING AND PROTECTION OF ALL BURIED UTILITIES.

X:\000_Universal Folder\VEI Standards\AutoCAD\Construction Standards\pdf.dwg 3/7/2022 8:08 AM By: clevin

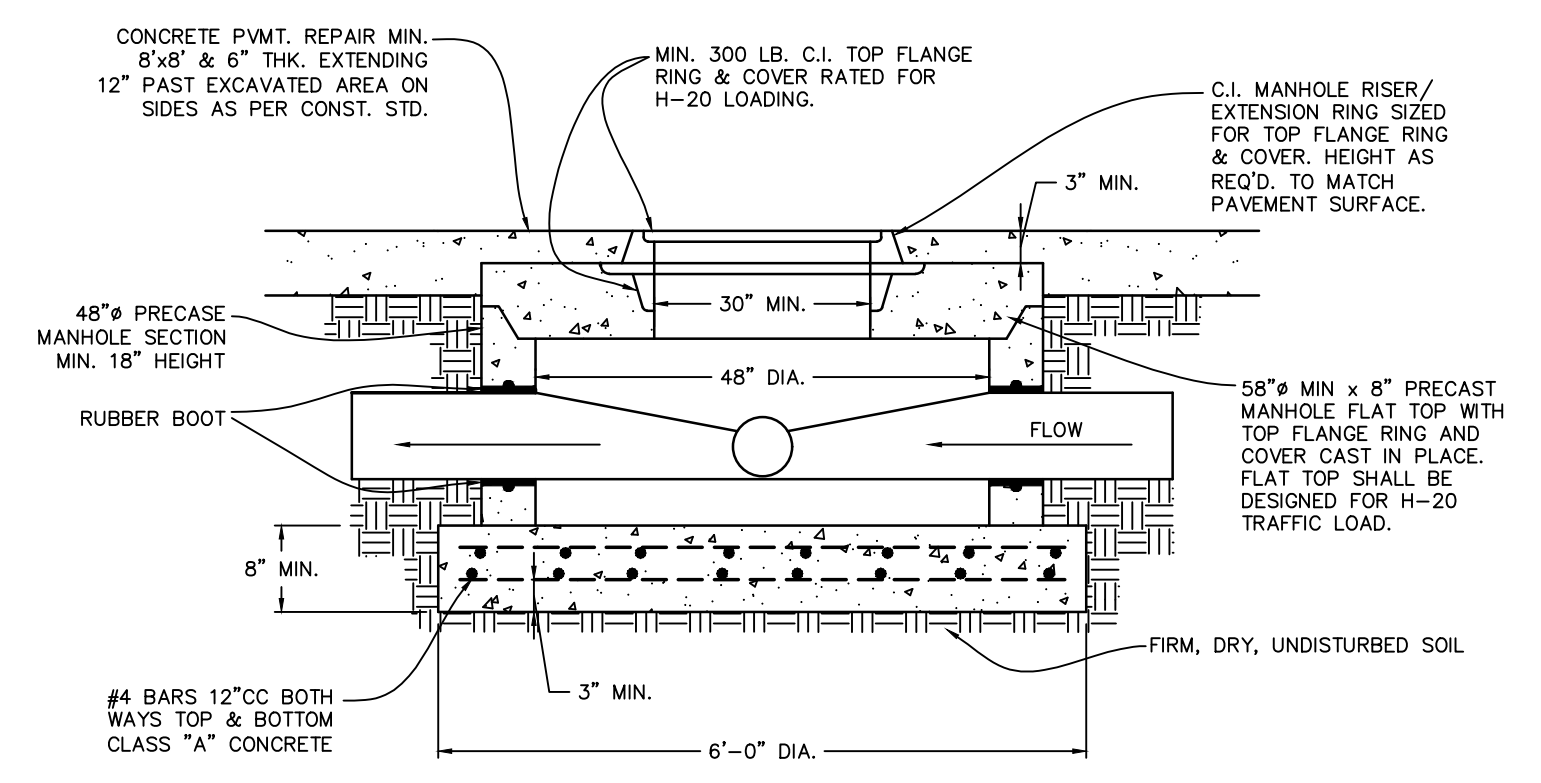
LEGEND



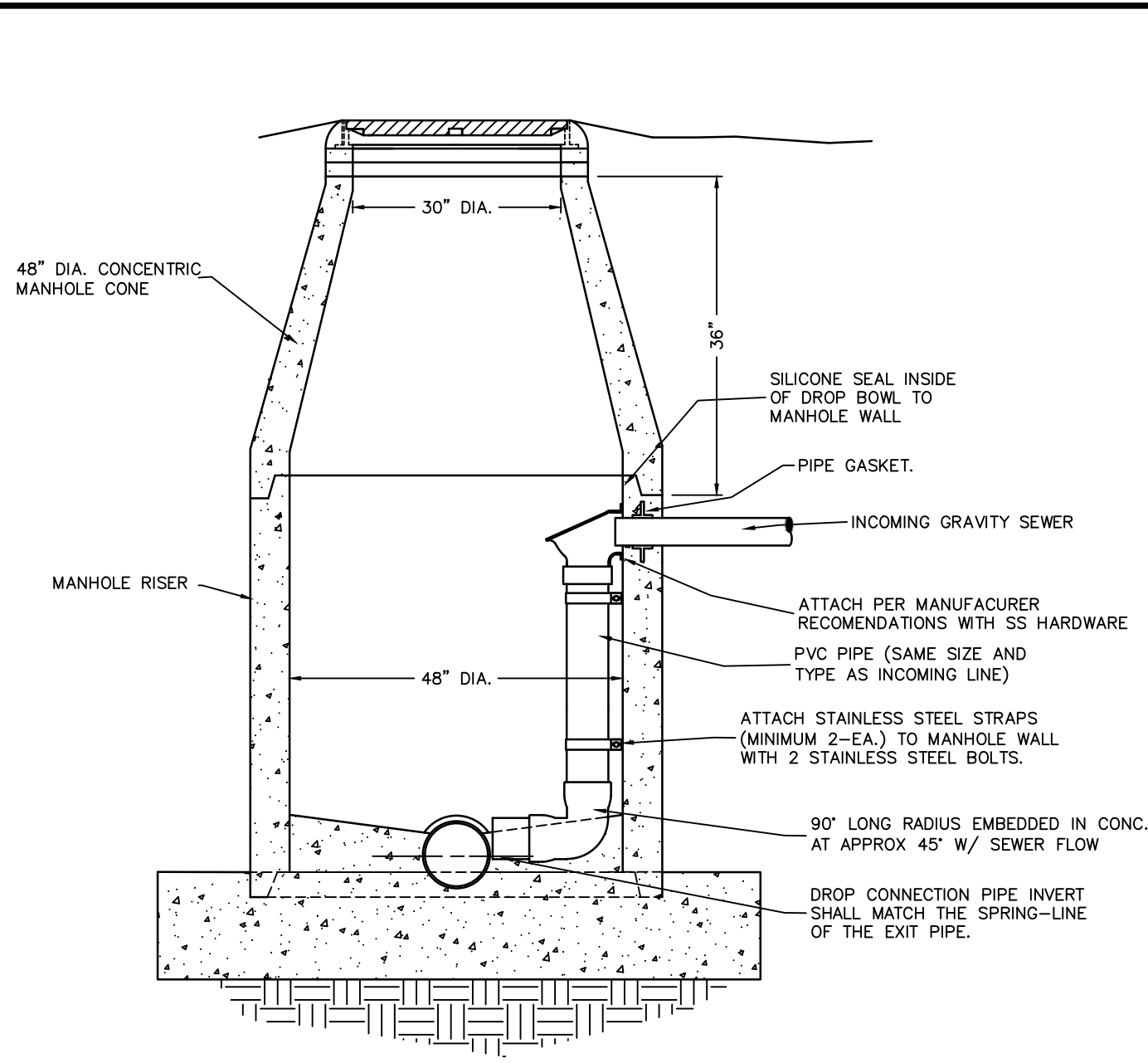


48" PRECAST CONCRETE MANHOLE
SCALE: N.T.S.

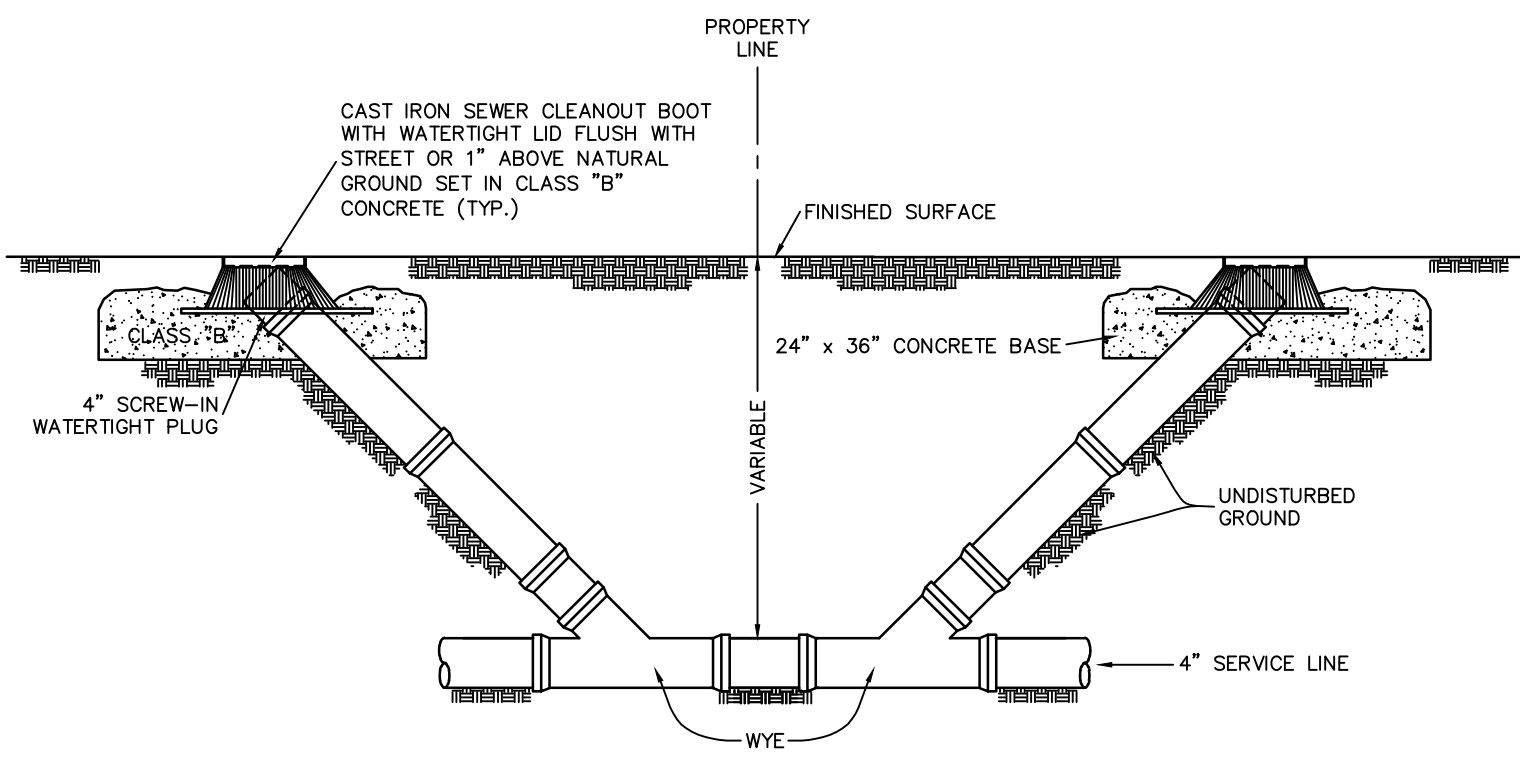
- NOTES:
- WHERE WATERTIGHT MANHOLE CASTINGS ARE SPECIFIED ON THE DRAWINGS, THEY SHALL BE OF THE BOLT-DOWN VARIETY WITH A NEOPRENE OR RUBBER GASKET BETWEEN THE RING & COVER (SEE SPECS)
 - ANTI INFILTRATION INFLOW RING & COVER
 - SET GRADE-RINGS (IF ANY) AND FRAME IN A BED OF GROUT. CAP SHOULDERS WITH NON-SHRINK GROUT.



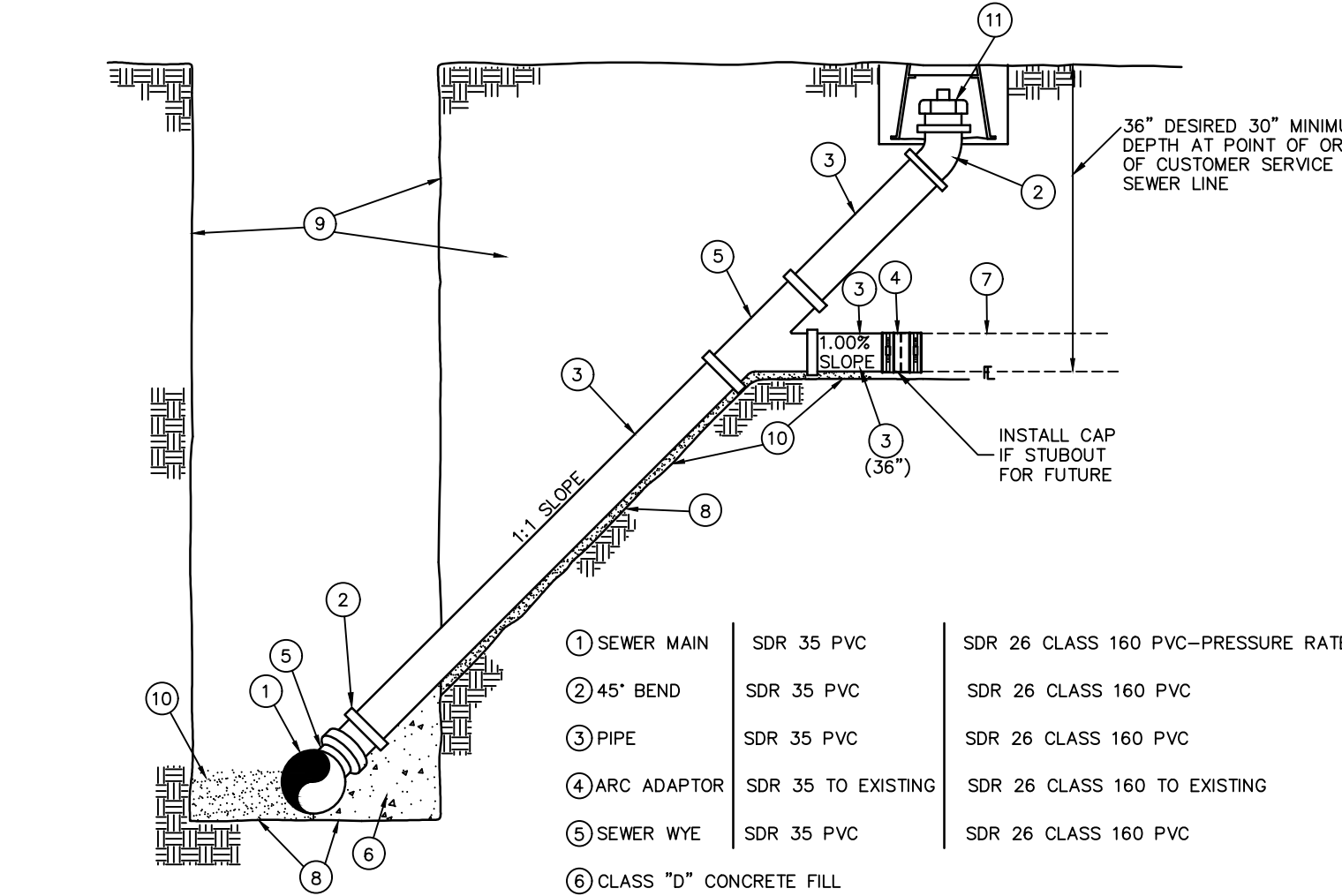
SPECIAL MANHOLE WITH LESS THAN 36" COVER
SCALE: N.T.S.



MANHOLE INSIDE DROP STRUCTURE
SCALE: N.T.S.



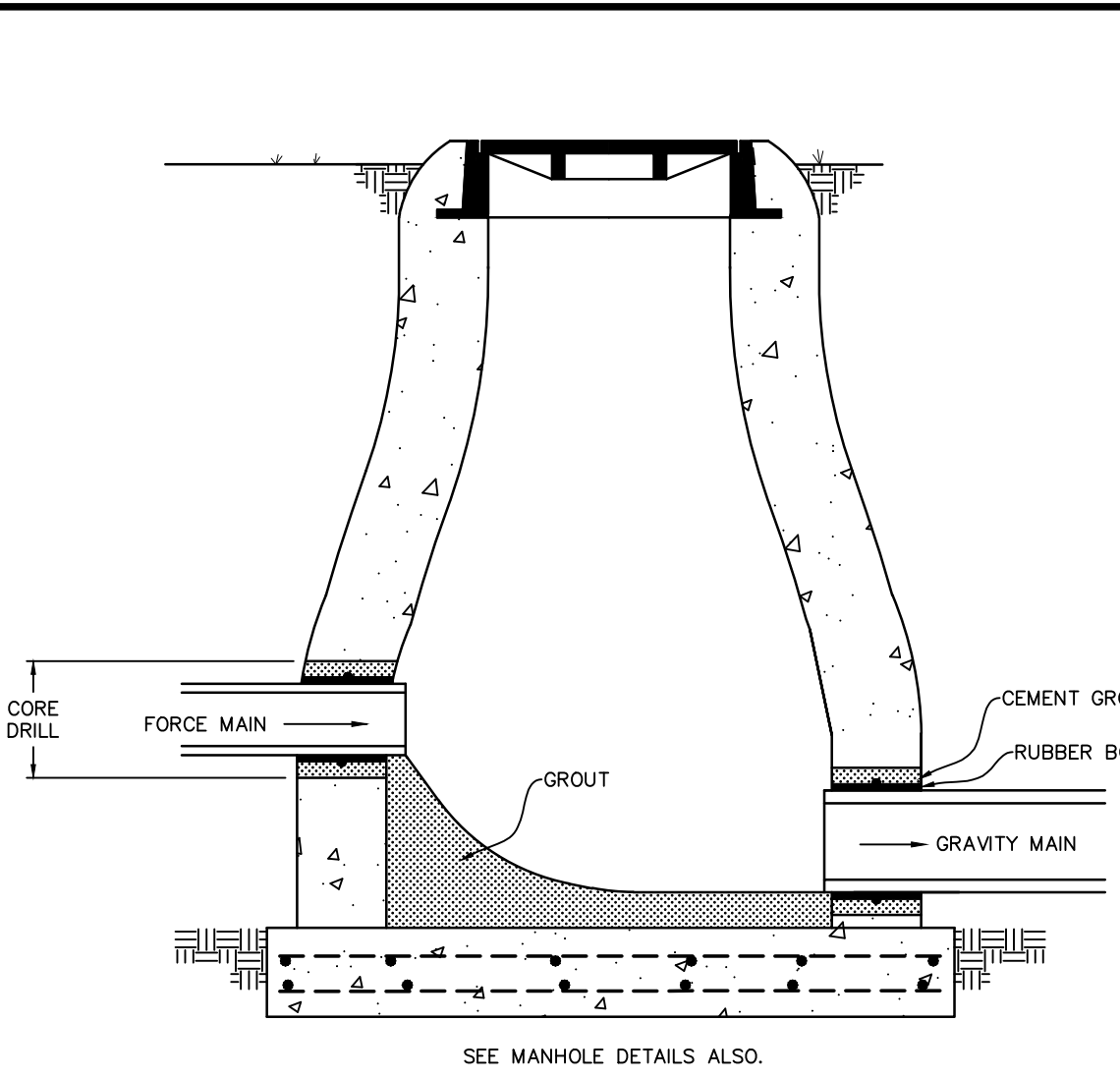
DOUBLE SEWER SERVICE CLEANOUT
SCALE: N.T.S.



CUSTOMER SEWER SERVICE TRANSFER WITH CLEANOUT
SCALE: N.T.S.

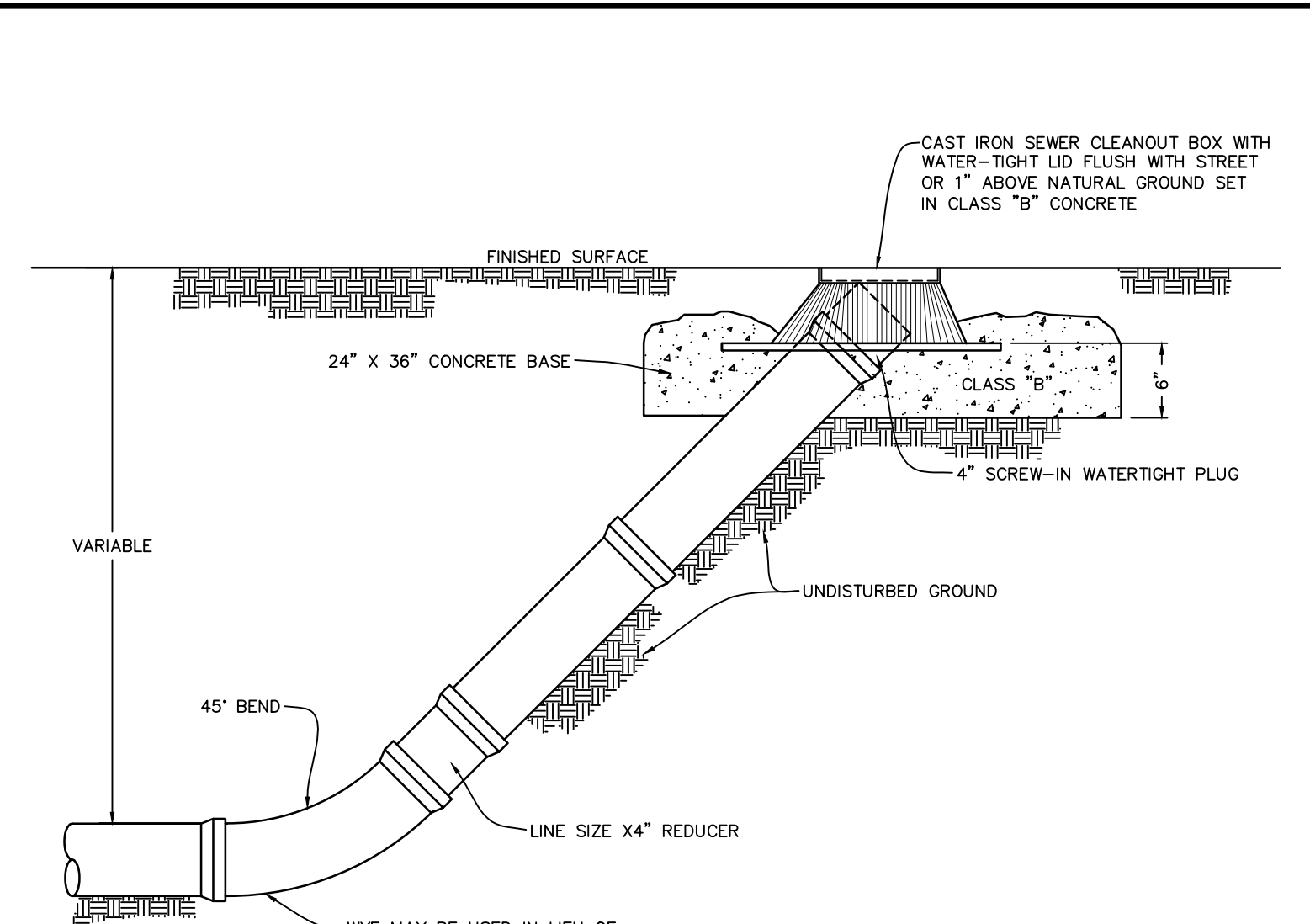
- | | | |
|---|--------------------|-------------------------------------|
| 1 SEWER MAIN | SDR 35 PVC | SDR 26 CLASS 160 PVC-PRESSURE RATED |
| 2 45° BEND | SDR 35 PVC | SDR 26 CLASS 160 PVC |
| 3 PIPE | SDR 35 PVC | SDR 26 CLASS 160 PVC |
| 4 ARC ADAPTOR | SDR 35 TO EXISTING | SDR 26 CLASS 160 TO EXISTING |
| 5 SEWER WYE | SDR 35 PVC | SDR 26 CLASS 160 PVC |
| 6 CLASS "D" CONCRETE FILL | | |
| 7 EXISTING CUSTOMER SERVICE | | |
| 8 UNDISTURBED GROUND | | |
| 9 SEWER LINE TRENCH | | |
| 10 EMBEDMENT MATERIAL | | |
| 11 CLEANOUT W/ 4" SCREW-IN WATERTIGHT PLUG IN PLASTIC SEWER BOX | | |

- GENERAL NOTES
- SANITARY TEE'S OR T-Y'S WILL NOT BE PERMITTED
 - TAPPING EXISTING LINES WILL REQUIRE TAPPING SADDLE
 - CONTRACTOR SHALL FURNISH SEWER MAIN STATION NUMBERS ON ALL TAPS
 - SEE TECHNICAL SPECIFICATIONS FOR ADDITIONAL DETAILS/REQUIREMENTS
 - TRACER TAPE REQUIRED ON HIGHWAY R.O.W.

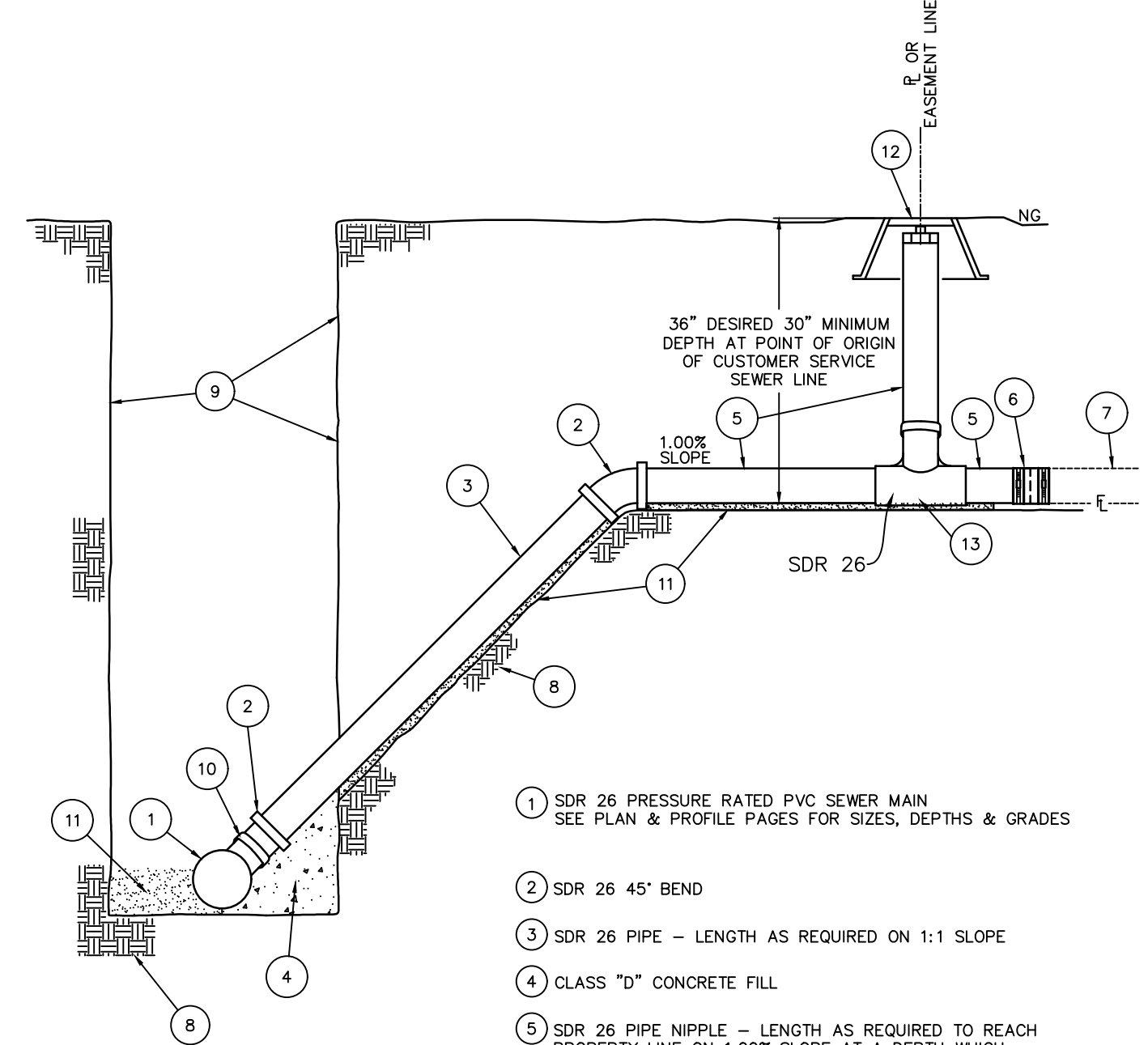


FORCE MAIN CONNECTION INTO MANHOLE
SCALE: N.T.S.

FOR EXISTING MANHOLES, CORE DRILL HOLE 4" LARGER THAN PIPE O.D. INSTALL RUBBER BOOT TO CENTER OF WALL THEN PACK ANNUAL SPACE ON BOTH SIDES WITH NON-SHRINK GROUT.



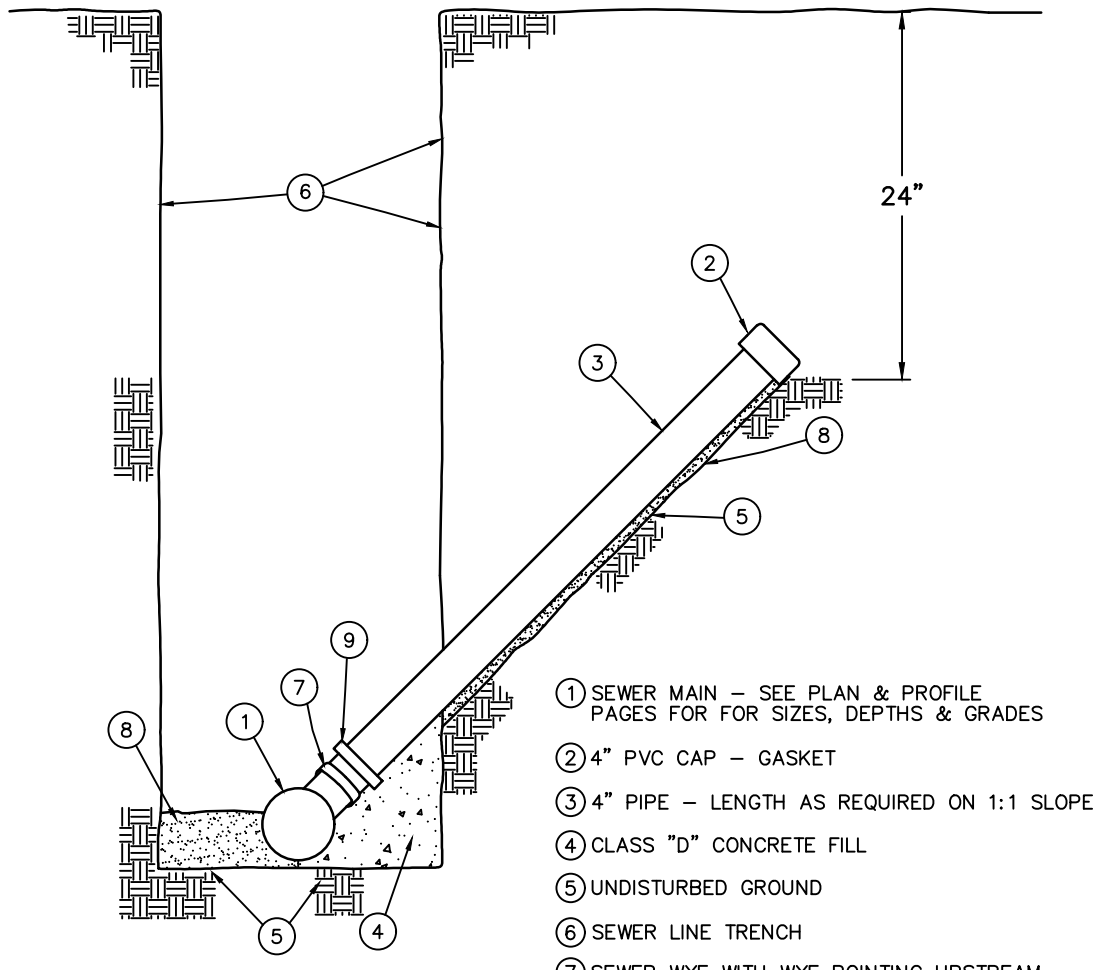
MAIN LINE SEWER CLEANOUT
SCALE: N.T.S.



CUSTOMER SEWER SERVICE TRANSFER TO SDR 26 PRESSURE RATED PVC MAIN
SCALE: N.T.S.

- GENERAL NOTES
- SANITARY TEE'S OR T-Y'S AT WASTEWATER MAIN WILL NOT BE PERMITTED
 - CONTRACTOR SHALL FURNISH SEWER MAIN STATION NUMBERS ON ALL TAPS
 - TRACER TAPE REQUIRED ON HIGHWAY R.O.W.
 - CLEANOUT TO BE INSTALLED AT PROP. LINE OR ESMT. LINE FOR ALL CUSTOMER SERVICE SERVICE TRANSFERS
 - SEE TECHNICAL SPECIFICATIONS FOR ADDITIONAL DETAILS/REQUIREMENTS
 - PRESSURE - RATED FITTINGS REQUIRED.

- SDR 26 PRESSURE RATED PVC SEWER MAIN SEE PLAN & PROFILE PAGES FOR SIZES, DEPTHS & GRADES
- SDR 26 45° BEND
- SDR 26 PIPE - LENGTH AS REQUIRED ON 1:1 SLOPE
- CLASS "D" CONCRETE FILL
- SDR 26 PIPE NIPPLE - LENGTH AS REQUIRED TO REACH PROPERTY LINE ON 1.00% SLOPE AT A DEPTH WHICH WILL ALLOW 36" DESIRED/30" MINIMUM DEPTH AT CONNECTION TO CUSTOMER SERVICE SEWER LINE TRENCH - SEE TRENCH PROTECTION AND TRENCH BACKFILL REQUIREMENTS
- ARC ADAPTOR AS REQUIRED FOR CONNECTION TO EXISTING SERVICE
- EXISTING CUSTOMER SERVICE
- UNDISTURBED GROUND
- SEWER LINE TRENCH - SEE TRENCH PROTECTION AND TRENCH BACKFILL REQUIREMENTS
- SDR 26 GASKETED PVC WYE WITH WYE POINTING UPSTREAM
- EMBEDMENT MATERIAL
- 4" SCREW-IN WATER TIGHT PLUG IN PLASTIC SEWER BOX
- TWO-WAY SANITARY TEE



CUSTOMER SEWER SERVICE STUBOUT
SCALE: N.T.S.

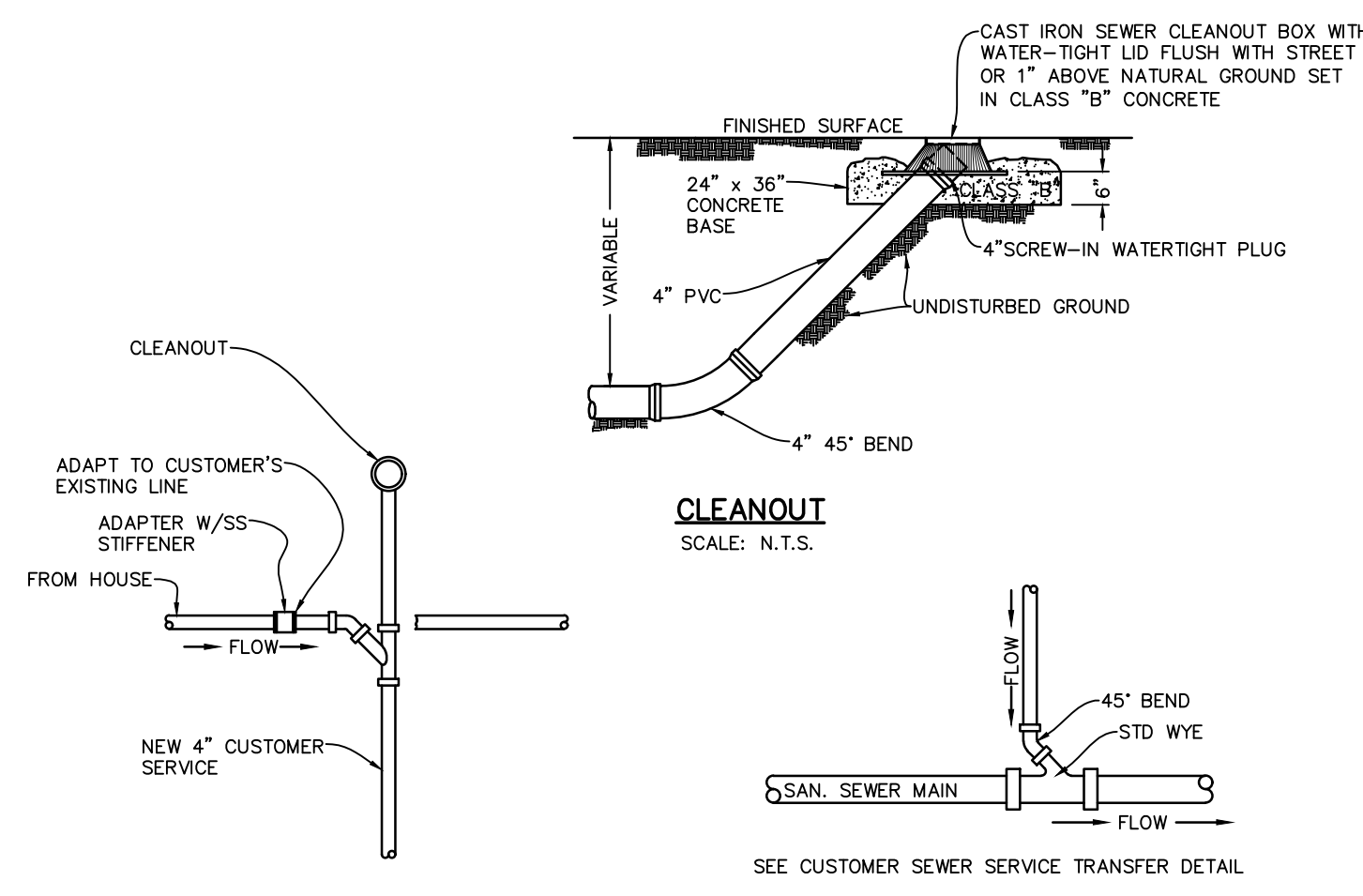
- GENERAL NOTES
- SANITARY TEE'S OR T-Y'S WILL NOT BE PERMITTED
 - TAPPING EXISTING LINES WILL REQUIRE TAPPING SADDLE
 - CONTRACTOR SHALL FURNISH SEWER MAIN STATION NUMBERS ON ALL TAPS
 - SEE TECHNICAL SPECIFICATIONS FOR ADDITIONAL DETAILS/REQUIREMENTS
 - TRACER TAPE REQUIRED ON HIGHWAY R.O.W.
 - SERVICE PIPE AND FITTINGS SHALL MATCH MAIN LINE TYPE

THESE PLANS DO NOT INCLUDE NECESSARY COMPONENTS FOR CONSTRUCTION SAFETY.

NOTE: LOCATION OF EXISTING BURIED UTILITIES, WHERE SHOWN, IS APPROXIMATE ONLY. THERE MAY BE UTILITIES WHICH ARE NOT SHOWN. THIS CONTRACTOR SHALL BE RESPONSIBLE FOR LOCATING AND PROTECTION OF ALL BURIED UTILITIES.

X:\000_Universal Folder\VEI Standards\AutoCAD\Construction Standards\pdf.dwg 3/7/2022 8:08 AM By: Cheim

X:\000_Universal_Folder\VEI_Standards\AutoCAD\Construction_Standards\pdf.dwg 3/7/2022 8:08 AM By: Clewin

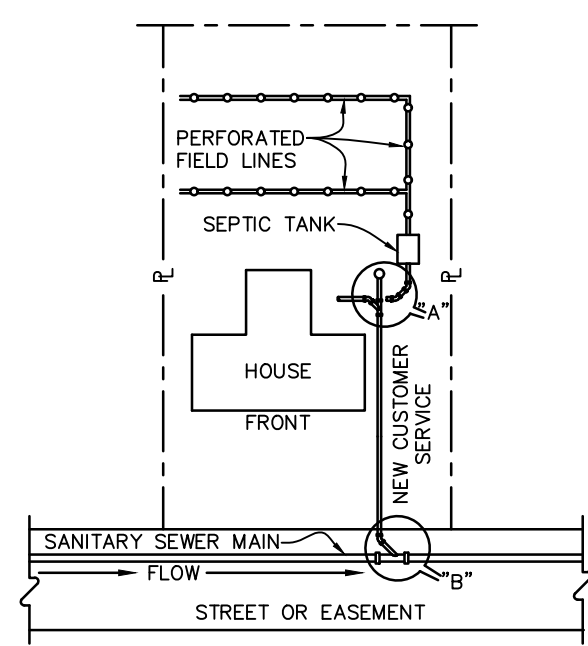


CLEANOUT
SCALE: N.T.S.

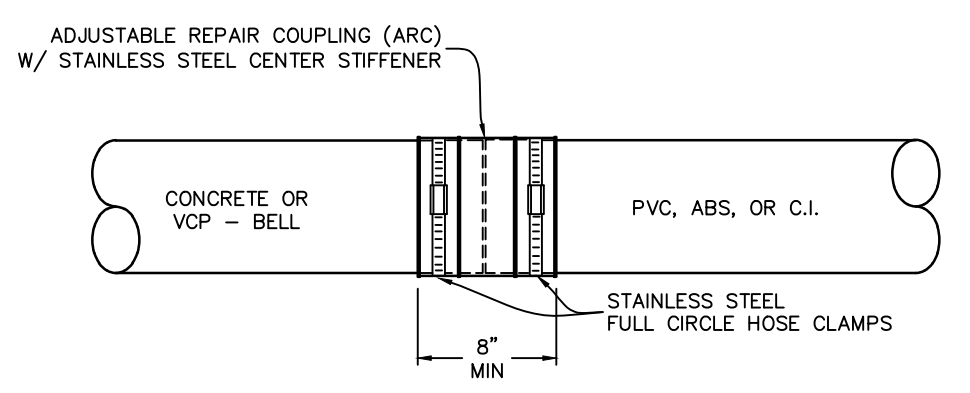
DETAIL "A"

DETAIL "B"

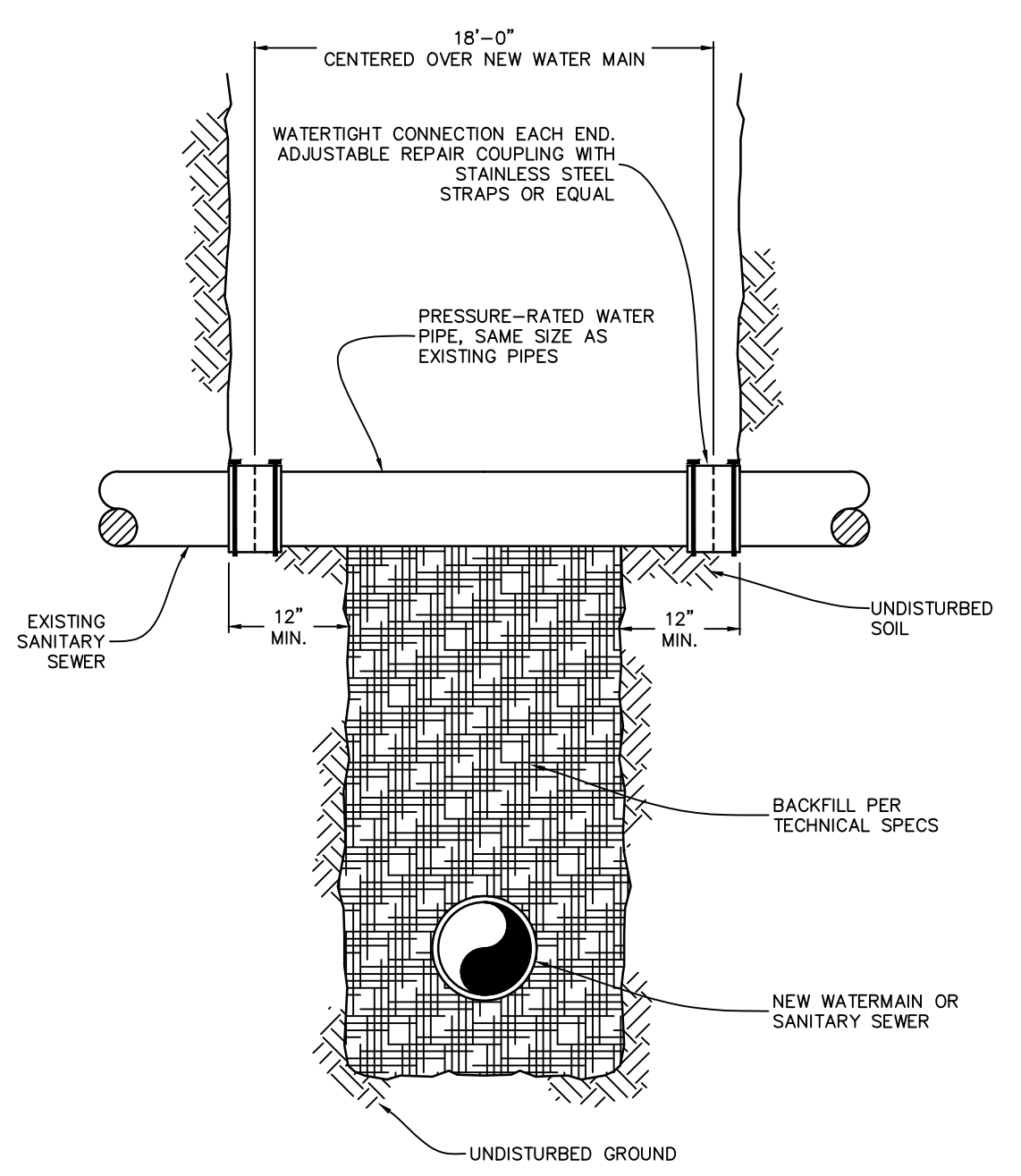
- NOTES:**
- SANITARY TEES OF T-Y FITTINGS WILL NOT BE ALLOWED AS ALTERNATE FOR STD. WYE AND 45° BEND.
 - CUSTOMERS SERVICE SHALL BE CONNECTED TO ONLY THE WATERTIGHT LINE BETWEEN HOUSE AND SEPTIC TANK. UNDER NO CONDITIONS SHALL THE SERVICE BE CONNECTED TO A SEPTIC TANK FIELD LINE.



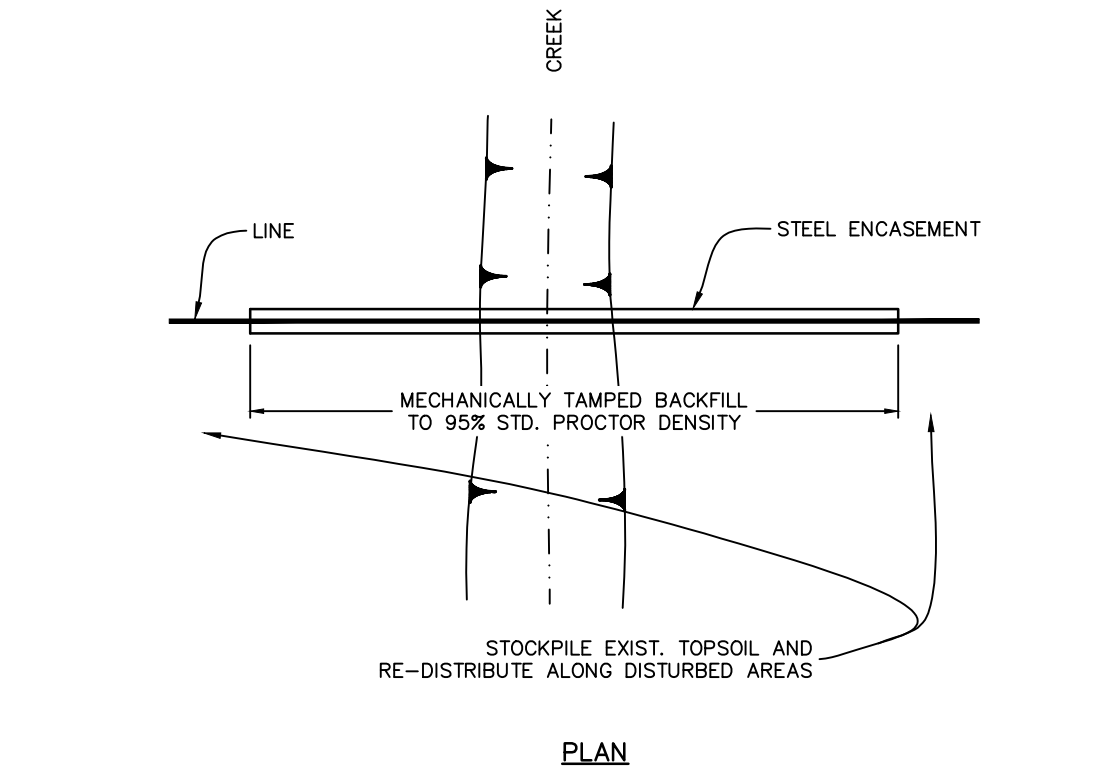
NEW CUSTOMER SERVICE FROM EXISTING SEPTIC TANK
SCALE: N.T.S.



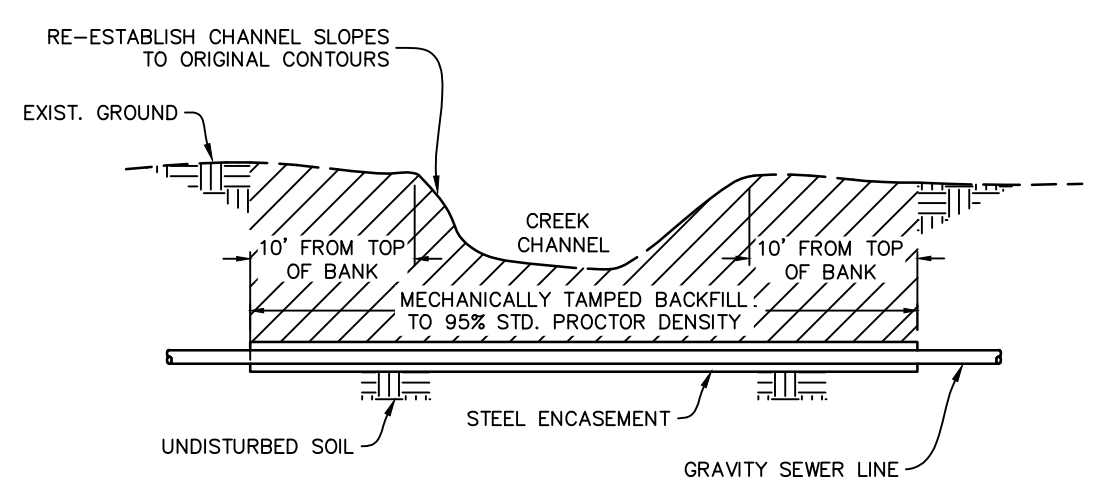
VARIED TYPES OF GRAVITY SEWER PIPE CONNECTION
SCALE: N.T.S.



EXISTING SANITARY SEWER REPAIR WHERE NEW UTILITY CROSSES UNDER
SCALE: N.T.S.

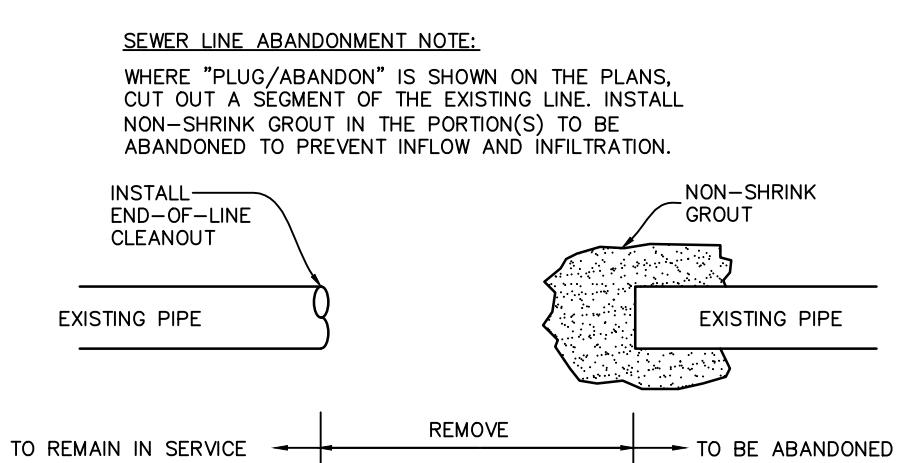


PLAN

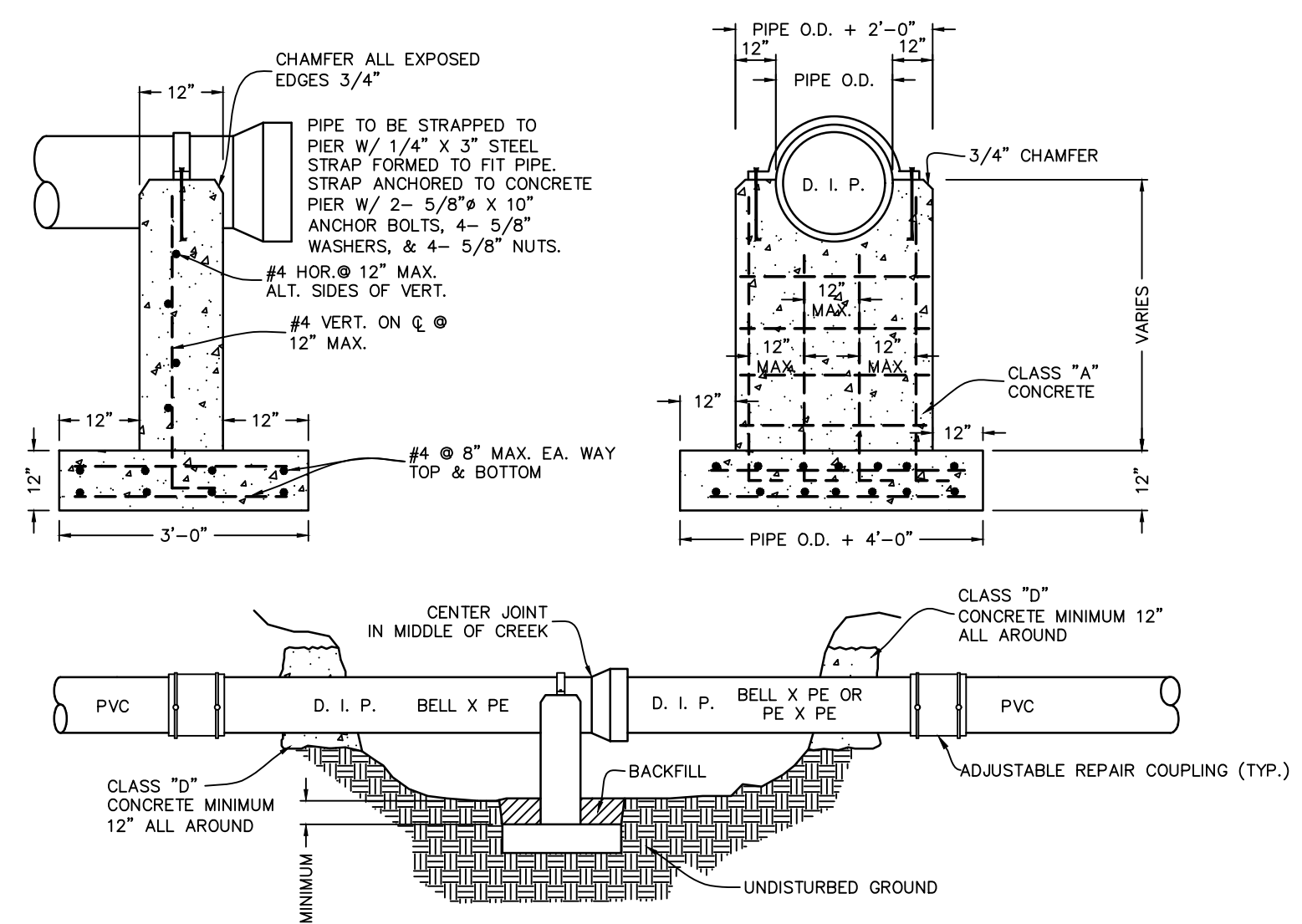


SECTION

GRAVITY SEWER LINE CREEK CROSSING
SCALE: N.T.S.



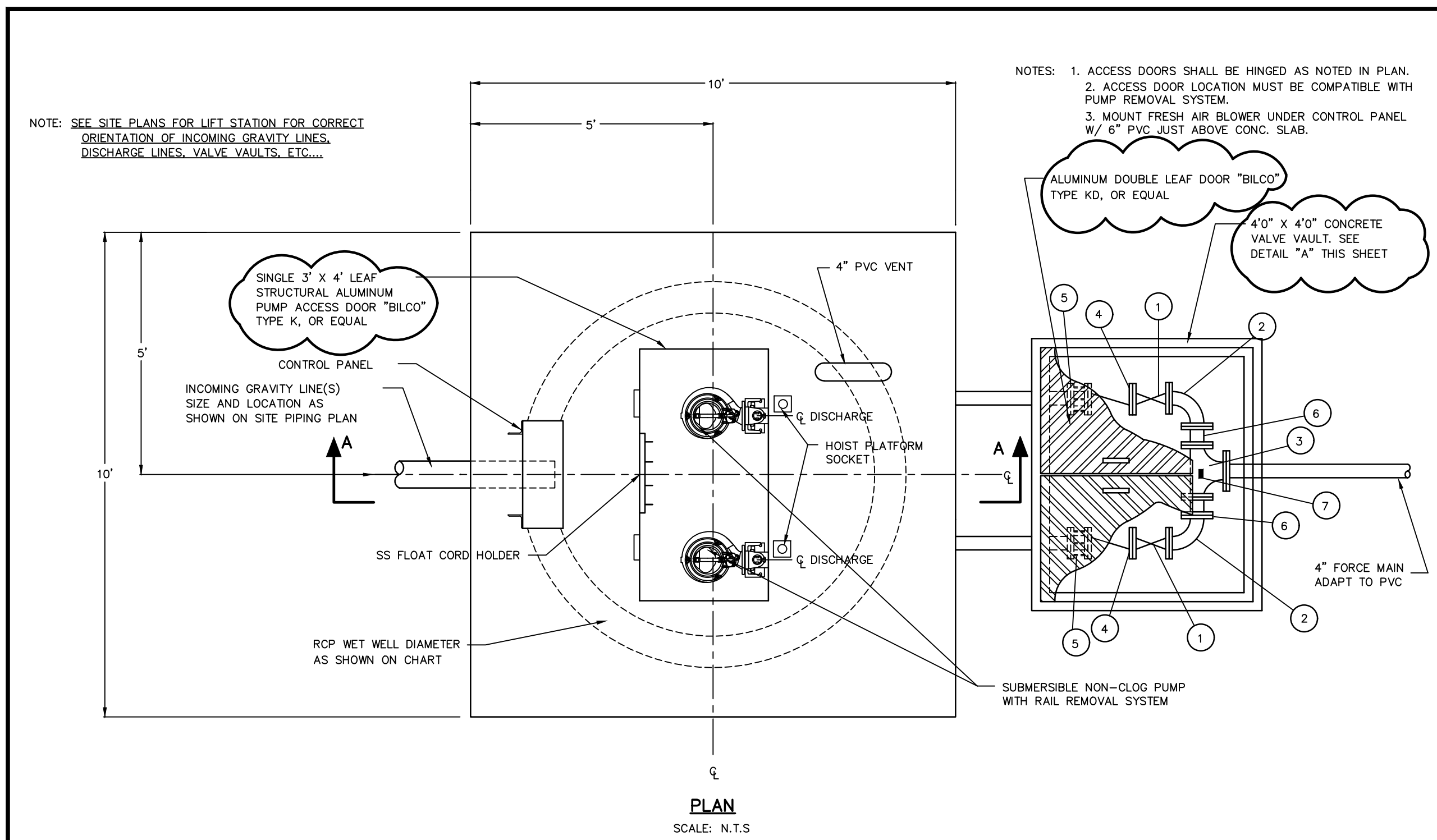
PLUG/ABANDON SEWER LINE
SCALE: N.T.S.



GRAVITY SEWER AERIAL CREEK CROSSING AND CONCRETE PIER PIPE SUPPORT
SCALE: N.T.S.

THESE PLANS DO NOT INCLUDE NECESSARY COMPONENTS FOR CONSTRUCTION SAFETY.

NOTE: LOCATION OF EXISTING BURIED UTILITIES, WHERE SHOWN, IS APPROXIMATE ONLY. THERE MAY BE UTILITIES WHICH ARE NOT SHOWN. THIS CONTRACTOR SHALL BE RESPONSIBLE FOR LOCATING AND PROTECTION OF ALL BURIED UTILITIES.



DIMENSION/ELEVATION CHART

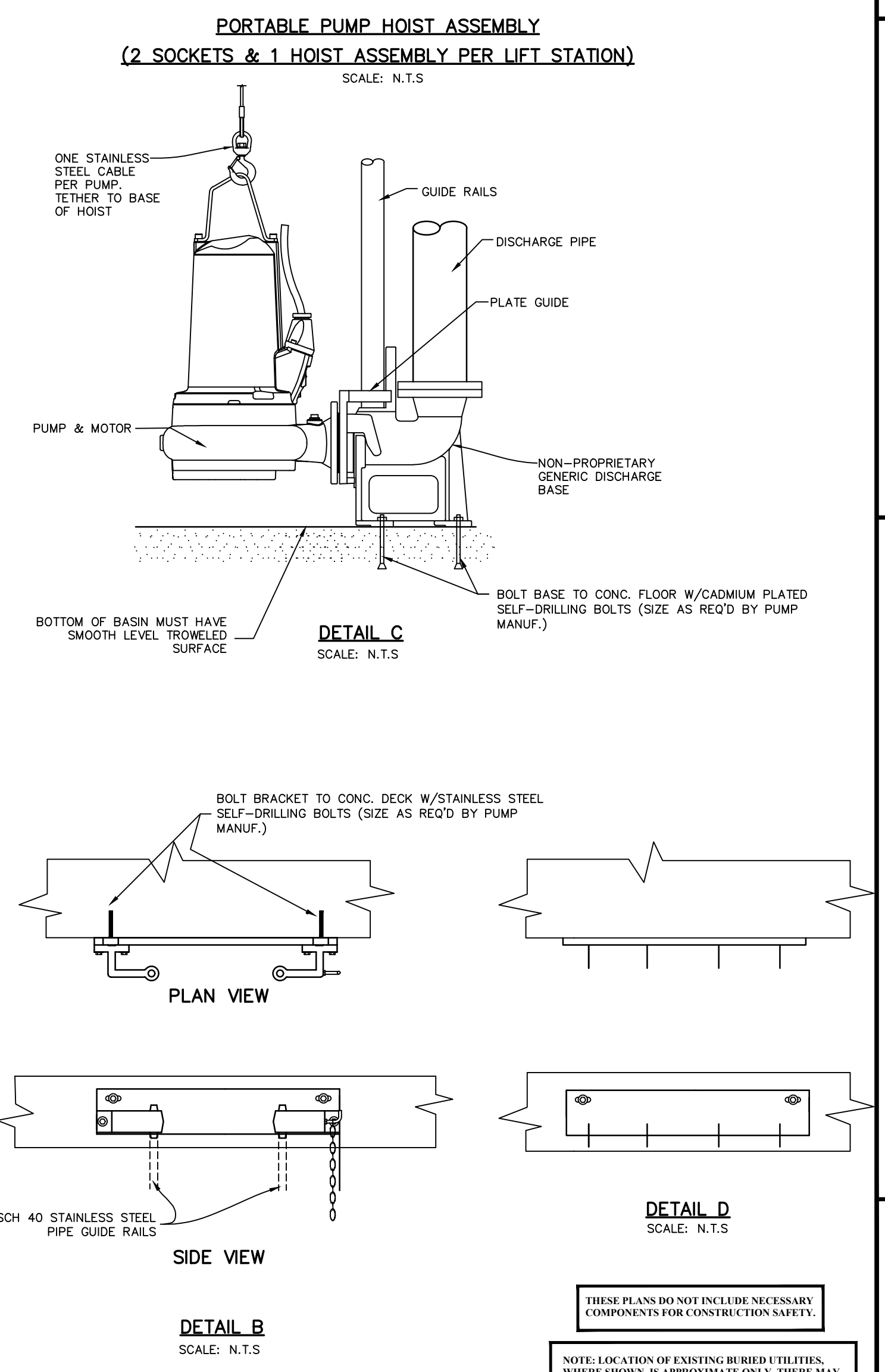
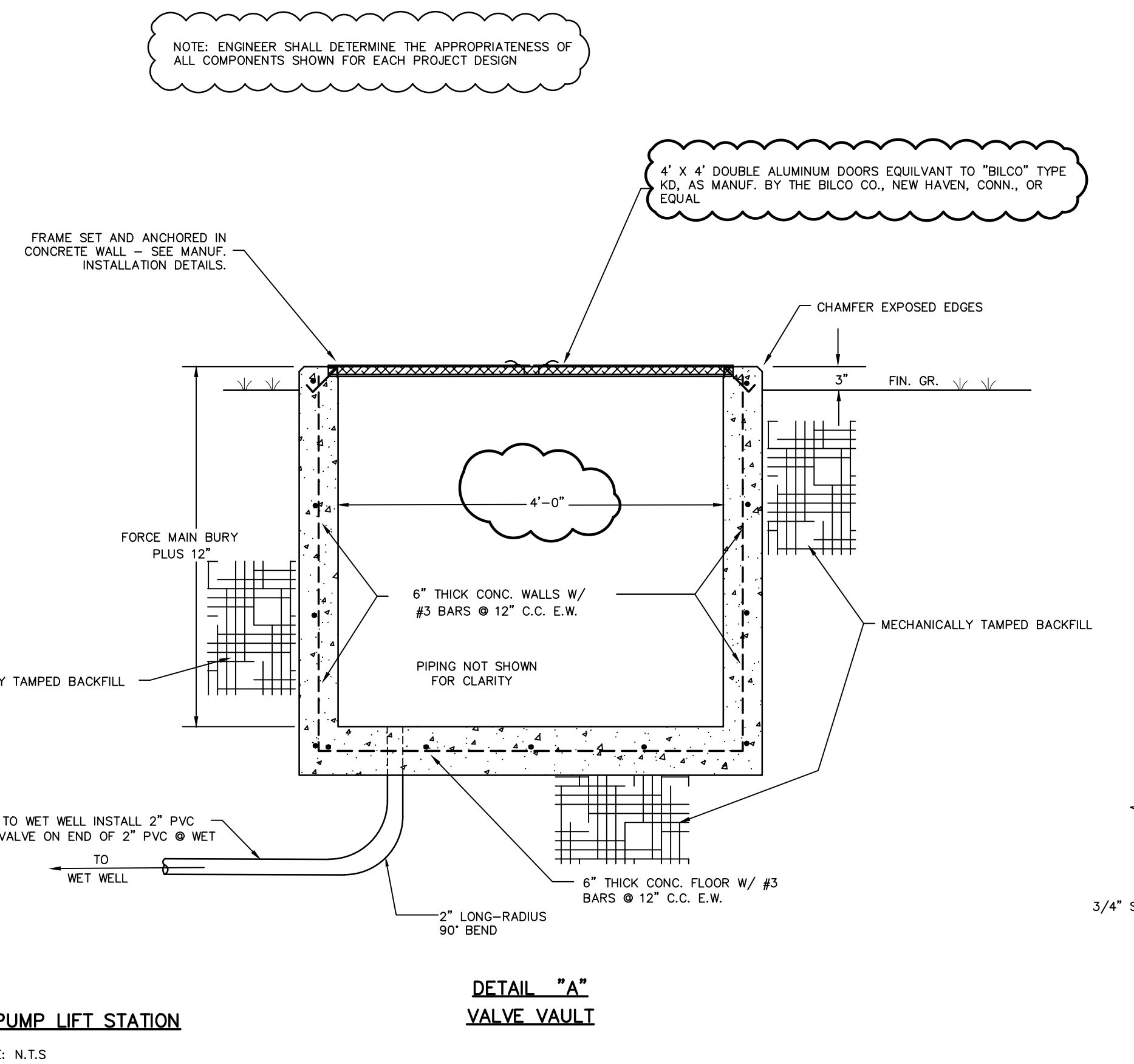
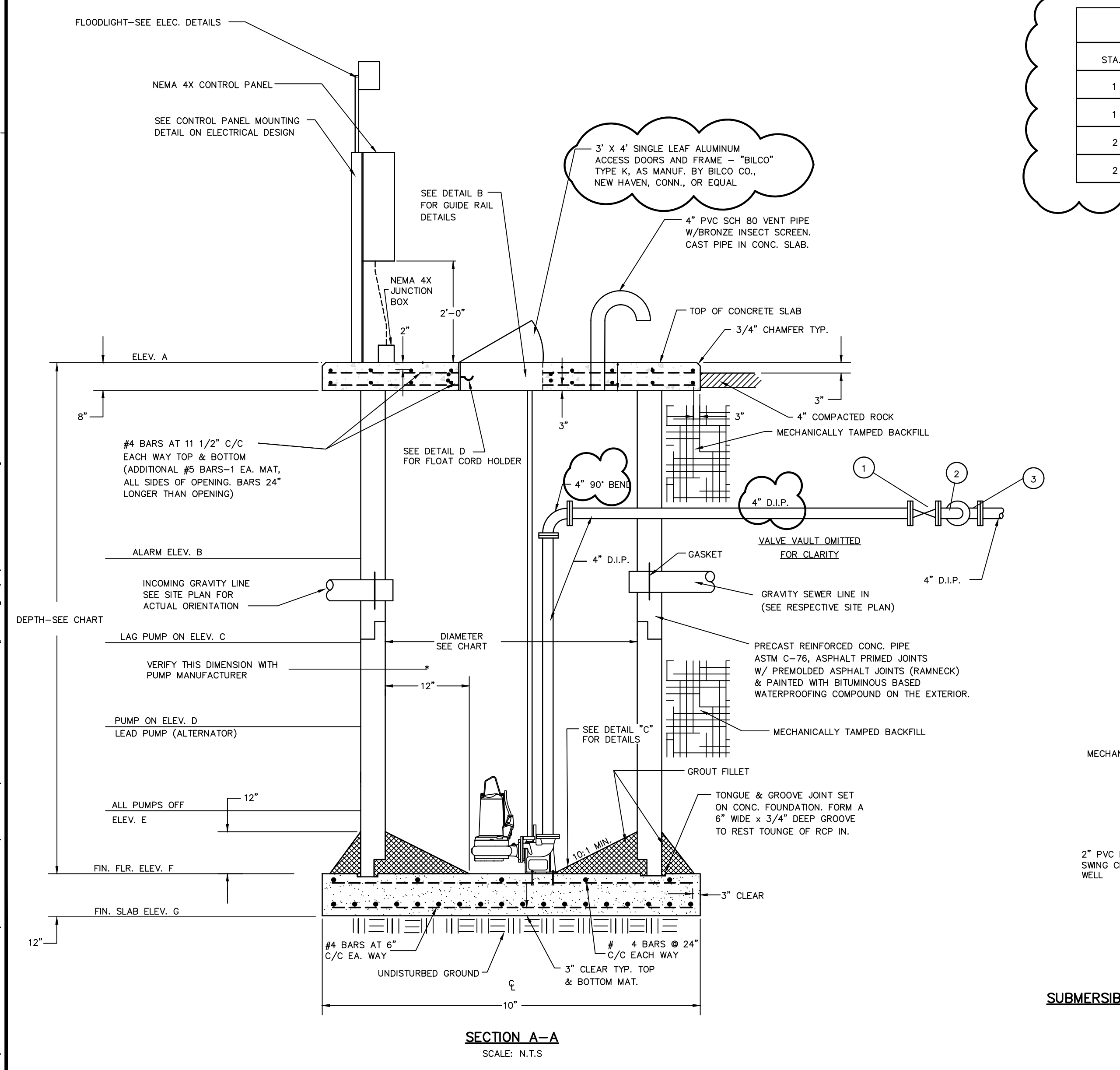
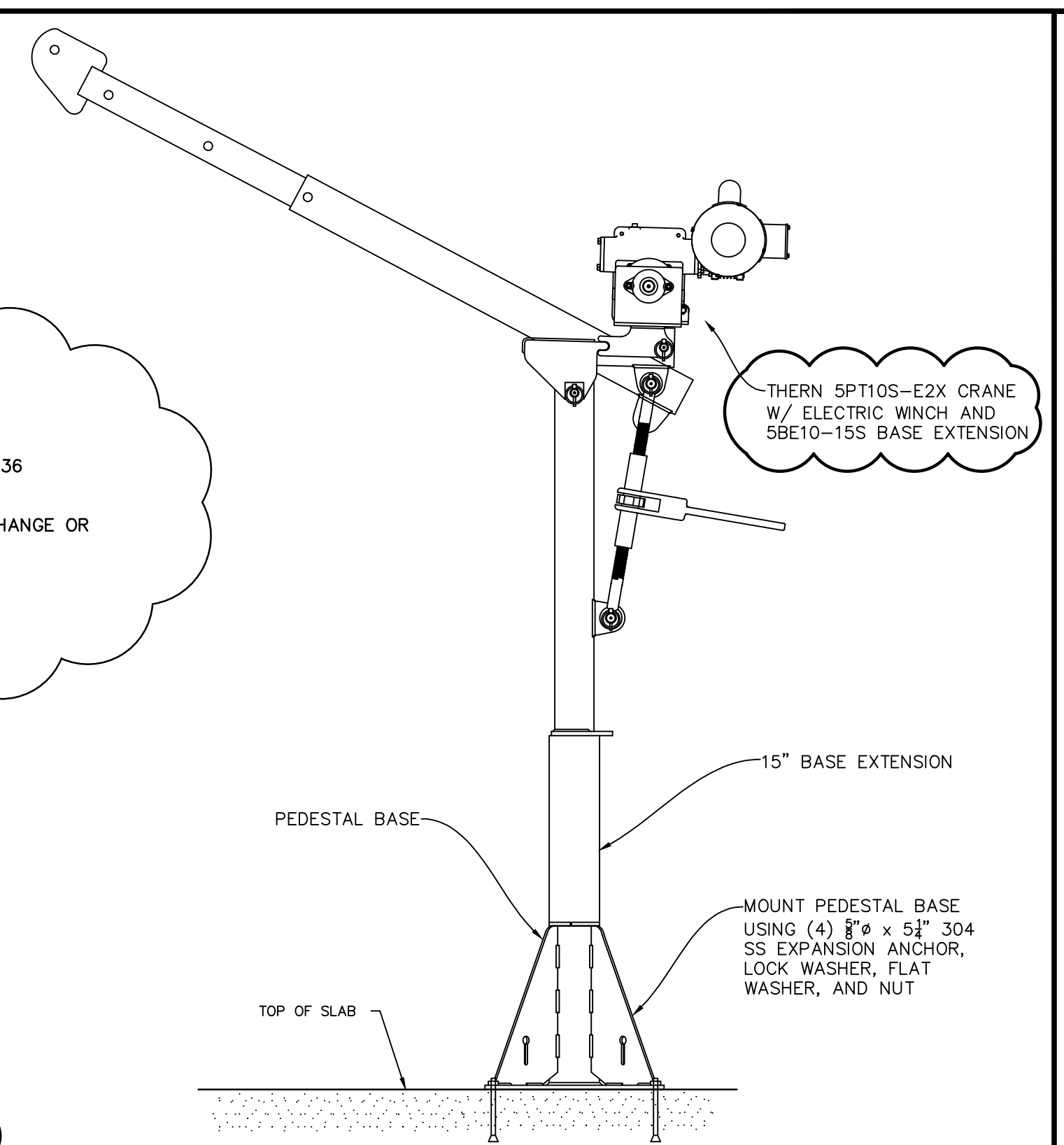
CRITERIA	LIFT STATION #1	LIFT STATION #2
DIAMETER	6'0" RCP	6'0" RCP
DEPTH	12'-9.6"	15'-0"
ELEV. A	756.00	739.50
ELEV. B	748.00	729.00
ELEV. C	747.00	728.00
ELEV. D	745.50	727.32
ELEV. E	744.70	725.90
ELEV. F	743.20	724.50
ELEV. G	742.20	723.50

FITTING SCHEDULE

ITEM	DESCRIPTION
1	4" GATE VLV. W/HANDWHEEL
2	4" D.I. 90° BEND
3	4" X 4" D.I. BULLHEAD TEE
4	4" CHECK VALVE (SEE NOTES)
5	4" FLANGED COUPLING ADAPTER
6	4" SPOOL PIECE
7	HOSE BIB TAP W/0-50 FT. LIQUID FILLED 2" GAUGE AND DIAPHRAM-TYPE GAUGE GUARD

PUMP DATA

STA.#	PUMP #	GPM	TDH	HP	RPM	VOLTS	PH	TYPE
1	1	100	48.0	5	1750	240	3	SUBMERSIBLE NON-CLOG
1	2	100	48.0	5	1750	240	3	SUBMERSIBLE NON-CLOG
2	1	100	37.9	3	1750	240	3	SUBMERSIBLE NON-CLOG
2	2	100	37.9	3	1750	240	3	SUBMERSIBLE NON-CLOG



X:\000_Universal_Folder\VEI_Standards\AutoCAD\Construction_Standards\pdf.dwg 3/7/2022 8:08 AM By:Cherim

EAST TEXAS MUD

SEWER CONSTRUCTION STANDARDS

HAYTER ENGINEERING
Practical Infrastructure Solutions
Tel: 979-515-1155 | Fax: 979-515-1156 | www.haytereng.com

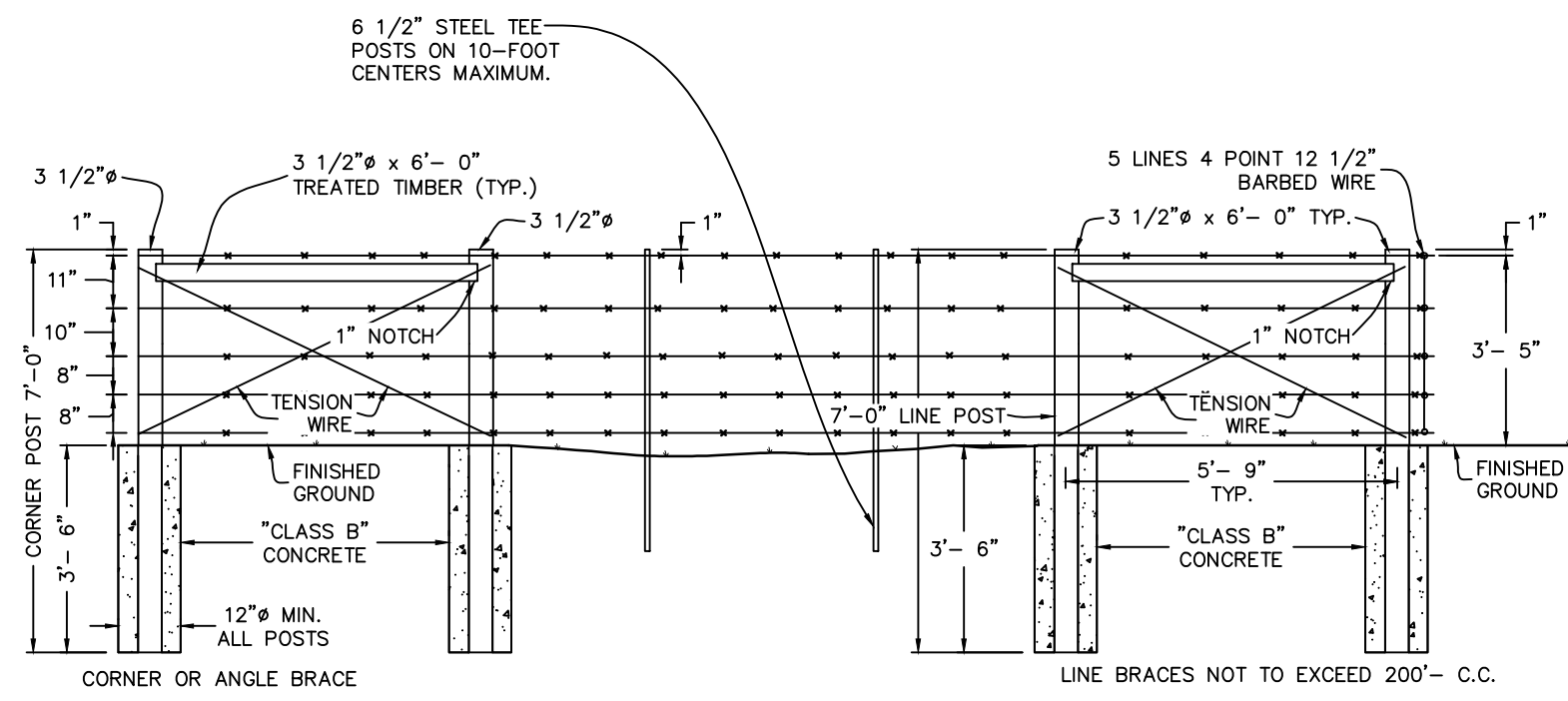
DRAWN BY: CK

DATE: MARCH 2022

SCALE: AS SHOWN

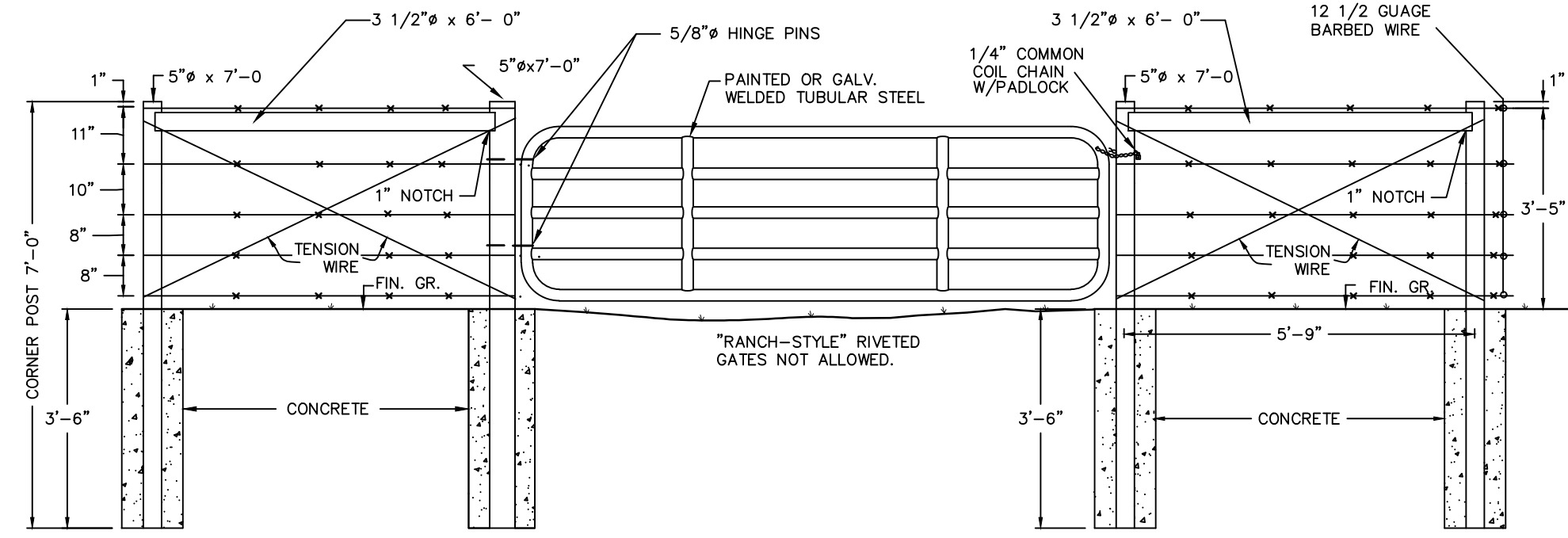
PAGE 5 OF 6 PAGES

X-XXX-XXX-XX



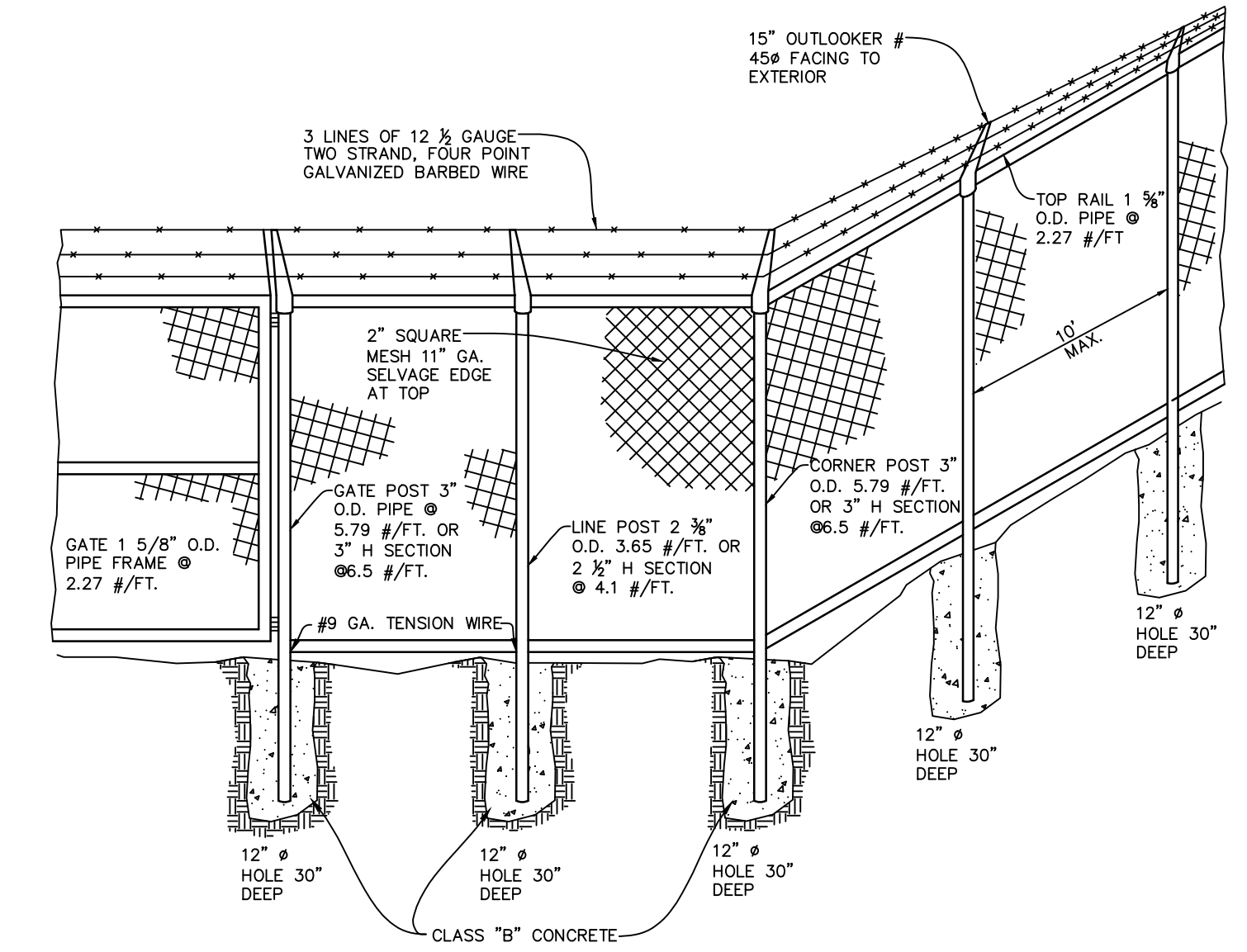
STAPLE WIRE TO WOODEN POSTS. USE MANUFACTURER'S CLIPS TO FASTEN WIRE TO STEEL FENCE POSTS. WIRE TO BE STRETCHED ONLY AFTER LINE BRACES AND CORNER OR ANGLE BRACES HAVE BEEN CONSTRUCTED AND AFTER CONCRETE HAS CURED FOR A WEEK. NO TEE POSTS ARE REQUIRED WHEN BRACES ARE LESS THAN 10 FEET APART. LINE BRACES ARE REQUIRED ON BOTH SIDES OF FENCES THAT WERE CUT FOR UTILITY LINE INSTALLATION.

BARBED WIRE FENCE
SCALE: N.T.S.

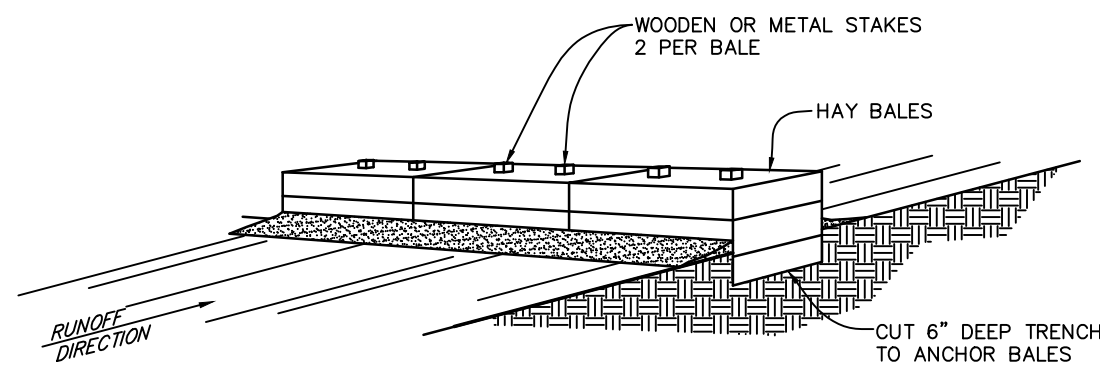


ACCESS GATE
SCALE: N.T.S.

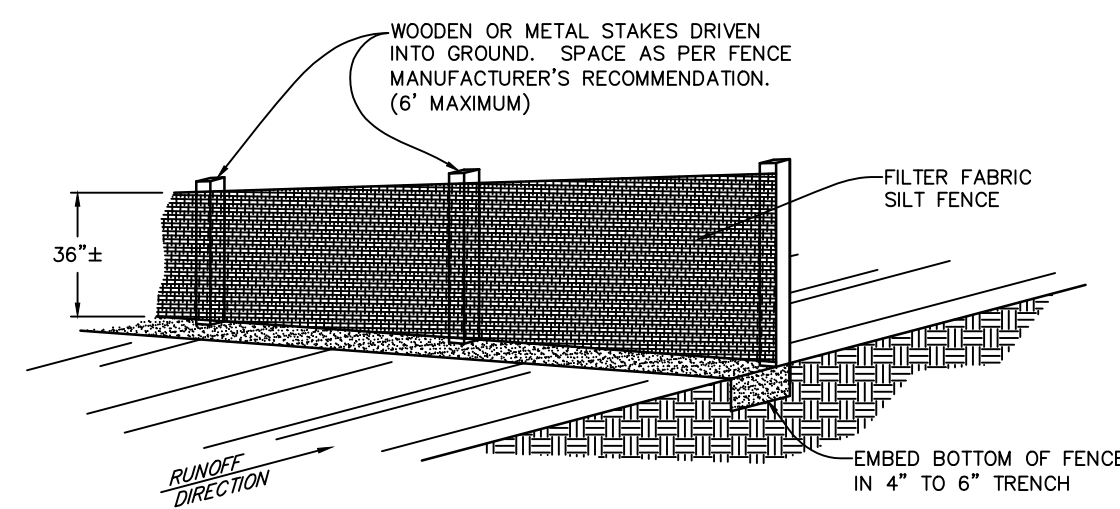
CONCRETE SHALL BE ALLOWED TO SET UP FOR 7 DAYS BEFORE HORIZONTAL BRACE POSTS OR TENSION WIRE ARE INSTALLED. STAPLE WIRE TO WOODEN POSTS. USE MANUFACTURER'S CLIPS TO FASTEN WIRE TO STEEL FENCE POSTS. WIRE TO BE STRETCHED ONLY AFTER LINE BRACES AND CORNER OR ANGLE BRACES HAVE BEEN CONSTRUCTED AND AFTER CONCRETE HAS CURED FOR A WEEK. NO TEE POSTS ARE REQUIRED WHEN BRACES ARE LESS THAN 10 FEET APART. LINE BRACES ARE REQUIRED ON BOTH SIDES OF FENCES THAT WERE CUT FOR UTILITY LINE INSTALLATION.



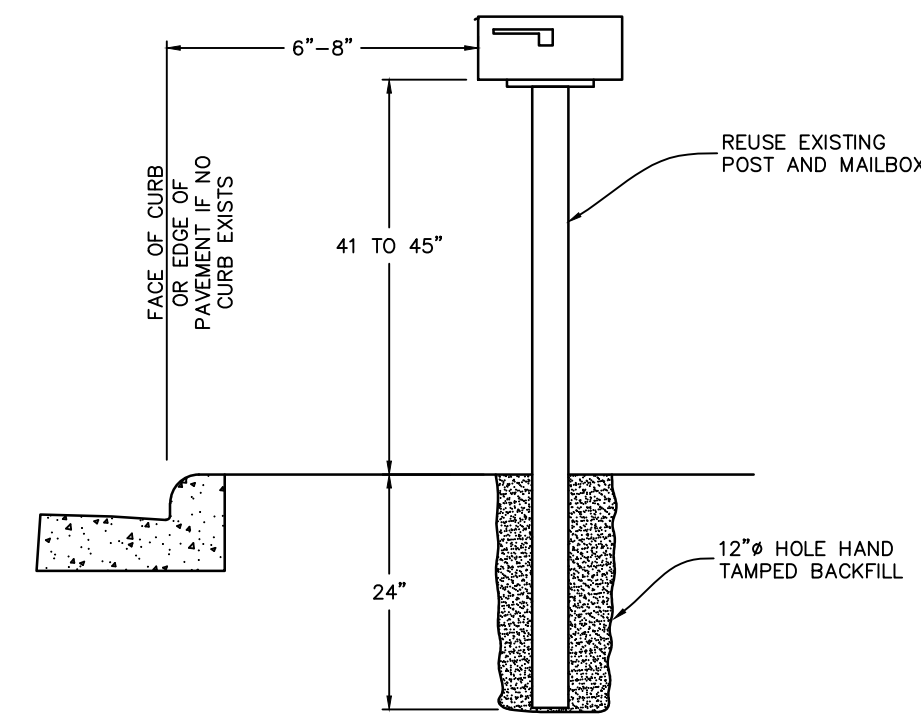
MANPROOF FENCE



TYPICAL HAY BALE DIKE



TYPICAL SILT FENCE BARRIER
EROSION AND SEDIMENT CONTROL
SCALE: N.T.S.



ENGINEER TO CONTACT LOCAL POSTMASTER FOR SET BACK DISTANCE FOR MAIL BOXES ON ROADS WITHOUT CURB

RELOCATED MAILBOX
SCALE: N.T.S.

THESE PLANS DO NOT INCLUDE NECESSARY COMPONENTS FOR CONSTRUCTION SAFETY.

NOTE: LOCATION OF EXISTING BURIED UTILITIES, WHERE SHOWN, IS APPROXIMATE ONLY. THERE MAY BE OTHER UTILITIES WHICH ARE NOT SHOWN. THIS CONTRACTOR SHALL BE RESPONSIBLE FOR LOCATING AND PROTECTING OF ALL BURIED UTILITIES.

EAST TEXAS MUD

MISCELLANEOUS CONSTRUCTION STANDARDS

HAYTER ENGINEERING

Practical Infrastructure Solutions
Tel: 504-515-1166 Fax: 504-515-1167 | ASHPE #2521 | LA #E1629
www.haytereng.com

DRAWN BY: CK

DATE: MARCH 2022

SCALE: AS SHOWN

PAGE 6 OF 6 PAGES

X-XXX-XXX-XX